

Wear Mei

2025



Designed in France



Wear Moi

375 Avenue Saint Just
 83130 La Garde – FRANCE
 Phone: +33 (0) 498 01 6000
 Email: info@wearmoi.com

Wear Moi (North, Central and South America)

3352 N Broadway – Chicago IL 60657 – USA
 Phone: +1 (773) 850 3119
 Email: usa@wearmoi.com

Artistic Director: Elisabeth Miegge-Ridet

Photographers: Daria Chenikona, Olivier Wecxteen

Dancers: Ana Turzuvhili, Anastasia Plotnikova, Maria Khoreva, Eleonora Nicolettii, Arina Biktimirova, Sebia Plantefève, Jing Jing Mao, Kristina Lind, Giulia Frosi, Anna Ol, Hazuki Fujimoto, Anna Osadcenko, Ina Lesnakowski, Elina Chernykh, Kuprina Yaroslavna, Anastasya Denisova, Andrew Larose, Leonardo Basilio, Conor Walmsley, Finn Faulconer, Sem Sjouke, Jason Reilly, Evan Mckie, Julien Lestel, Giacomo Beraldo,
 Page 4-5 & 112-113 Courtesy of European School of Ballet Jean Yves Esquerre

Ladies & Girls.....	4
Warm up & Activewear.....	92
Men & Boys.....	112
Shoes & Tights.....	134
Shoe Accessories.....	188
Tights.....	191
Accessories.....	196
Custom By Moi.....	200
More Color Choice.....	202
Your Logo Your Way.....	204
Size Chart.....	208

Wear Mei
Designed in France
LADIES & GIRLS





ABBIE

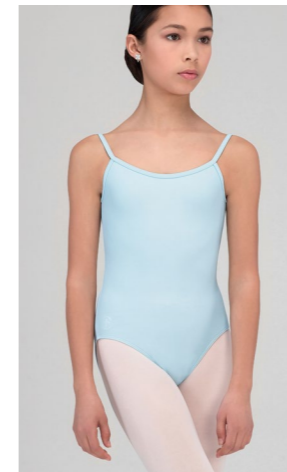


Children: 4/6 - 6/8 - 8/10 - 10/12 - 12/14
 Ladies: XS - S - M - L - XL ** - XXL** - XXXL***

* Not available in sizes 4/6 and 6/8 ** Available in Black, Navy and Burgundy only
 *** Available in Black, Navy and Burgundy only



Basic, simple and elegant camisole leotard with a mid-back profile and front pinch. Available in 25 colors.
 Microfiber - Front lining



THALIA

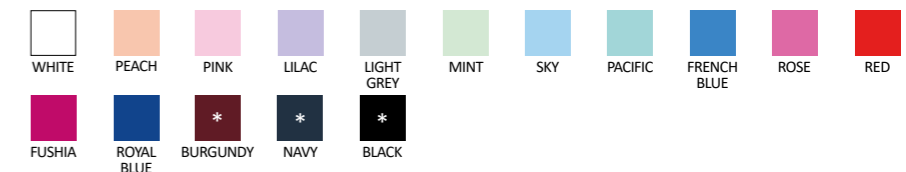


Children: 4/6 - 6/8 - 8/10 - 10/12 - 12/14
 Ladies: XS - S - M - L

* Not available in sizes 4/6 and 6/8



Basic camisole leotard with a V-back and back seam.
 Available in 16 colors.
 Microfiber - Front lining



GALATE

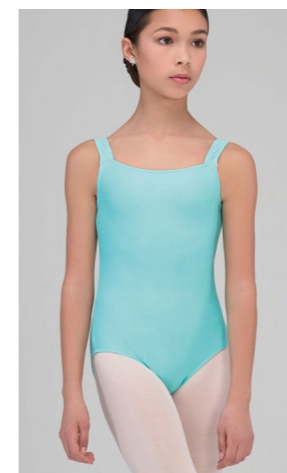
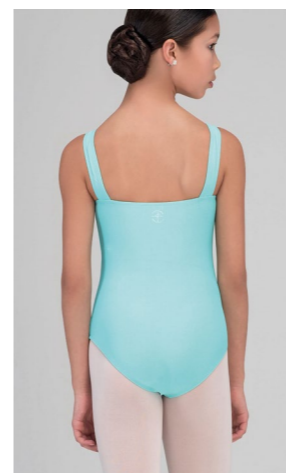


Children: 4/6 - 6/8 - 8/10 - 10/12 - 12/14
 Ladies: XS - S - M - L

* Not available in sizes 4/6 and 6/8



Elegant pinch front tank leotard with under bust detail made with soft microfiber.
 Microfiber - Front liningw



EMERAUDE

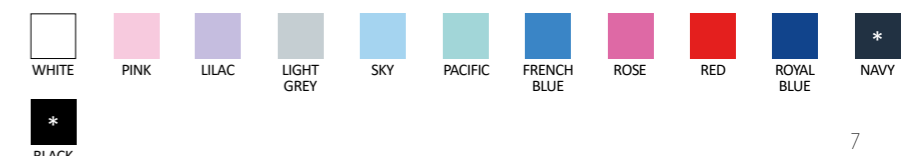


Children: 4/6 - 6/8 - 8/10 - 10/12 - 12/14
 Ladies: XS - S - M - L - XL ** - XXL**

* Not available in sizes 4/6 and 6/8
 ** Available in Black and Navy only



Basic square front tank style leotard. Available in 12 colors.
 Microfiber - Front lining

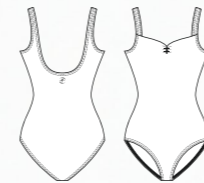




FAUSTINE

Children: 4/6 - 6/8 - 8/10 - 10/12 - 12/14
 Ladies: XS - S - M - L - XL** - XXL** - XXXL**
 * Not available in sizes 4/6 and 6/8
 ** Available in Black, Navy and Burgundy only

Microfiber basic tank leotard with front pinch.
 U-cut back. Available in 25 colors.
 Microfiber - Front lining





CANDIDE



Children: 2/4 - 4/6 - 6/8 - 8/10 - 10/12 - 12/14

Ladies: XS - S - M - L - XL** - XXL**

* Not available in sizes 2/4, 4/6 and 6/8

** Available in Black, Navy and Burgundy only

Classic short sleeve leotard with gathered scoop neckline and scoop back. Microfiber - Front lining



LOVINA



Children: 8/10 - 10/12 - 12/14

Ladies: XS - S - M - L - XL** - XXL**

** Available in Black, Navy, and Burgundy only

Classic long sleeve leotard with gathered scoop neckline and scoop back. Microfiber - Front lining

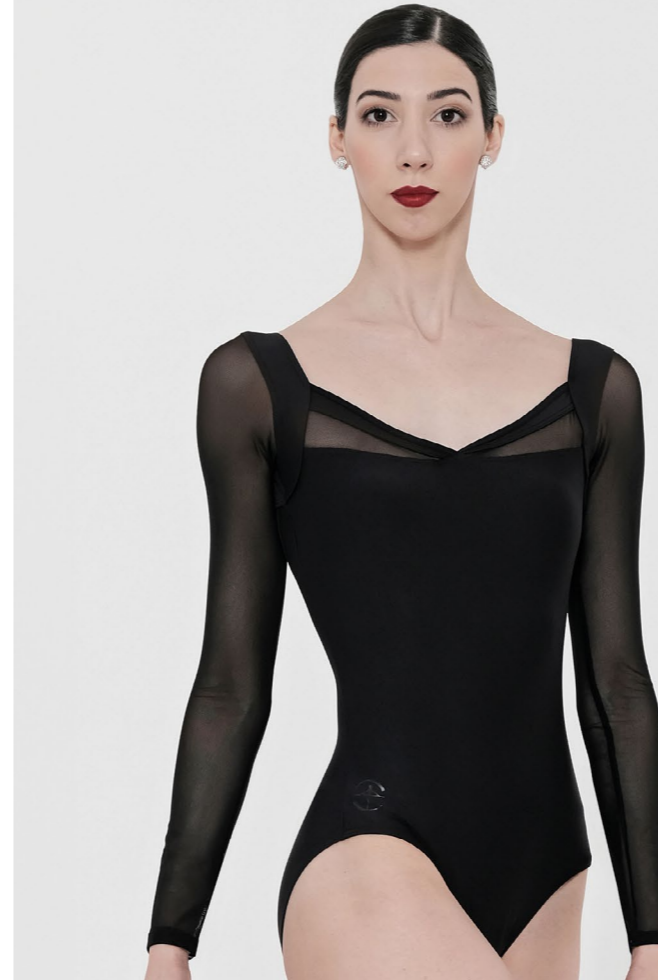
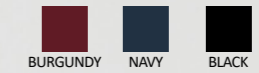
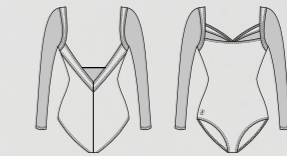


LAVANDE



Ladies: XS - S - M - L - XL - XXL

Long-sleeved microfiber leotard with sheer stretch tulle showcasing the arms, neckline, and back. Deep open back. Microfiber - Stretch Tulle - Front lining



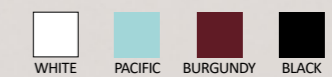
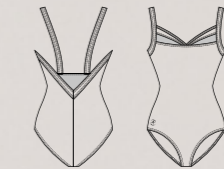
CYPRES

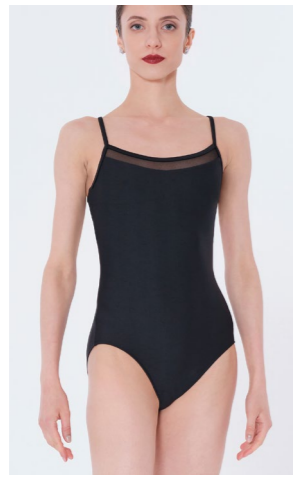


Children: 8/10 - 10/12 - 12/14

Ladies: XS - S - M - L

Microfiber camisole leotard with sheer tulle at the upper neckline and a triangle cut-out on the back. Deep open back. Microfiber - Stretch Tulle - Front lining



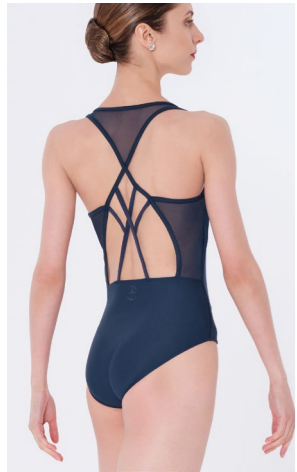


HARLOW



Ladies: XS - S - M - L

Sleek leotard with thin straps, a tulle neckline insert, and crisscross back straps with tulle accents. Includes a discreet chest pocket for removable bra inserts. Microfiber - Stretch Tulle - Front lining

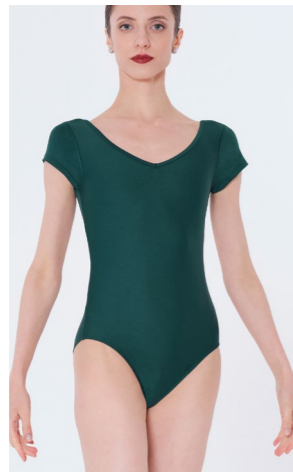
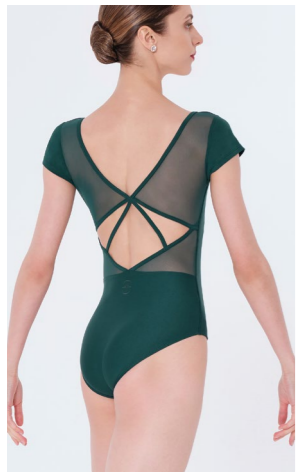


NEOMA



Ladies: XS - S - M - L

Leotard blending tulle with geometric crisscrossing. Tulle inserts on the sides and straps provide support and style. Features a discreet chest pocket for removable bra inserts. Microfiber - Stretch Tulle - Front lining

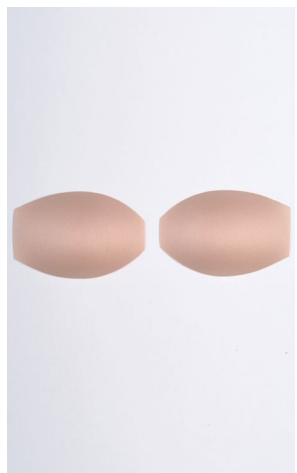
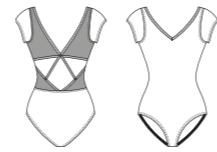


DOLORES



Ladies: XS - S - M - L

Leotard featuring short sleeves, a V-neckline, and a unique diamond-patterned tulle back. Includes a discreet chest pocket for removable bra inserts. Microfiber - Stretch Tulle - Front lining

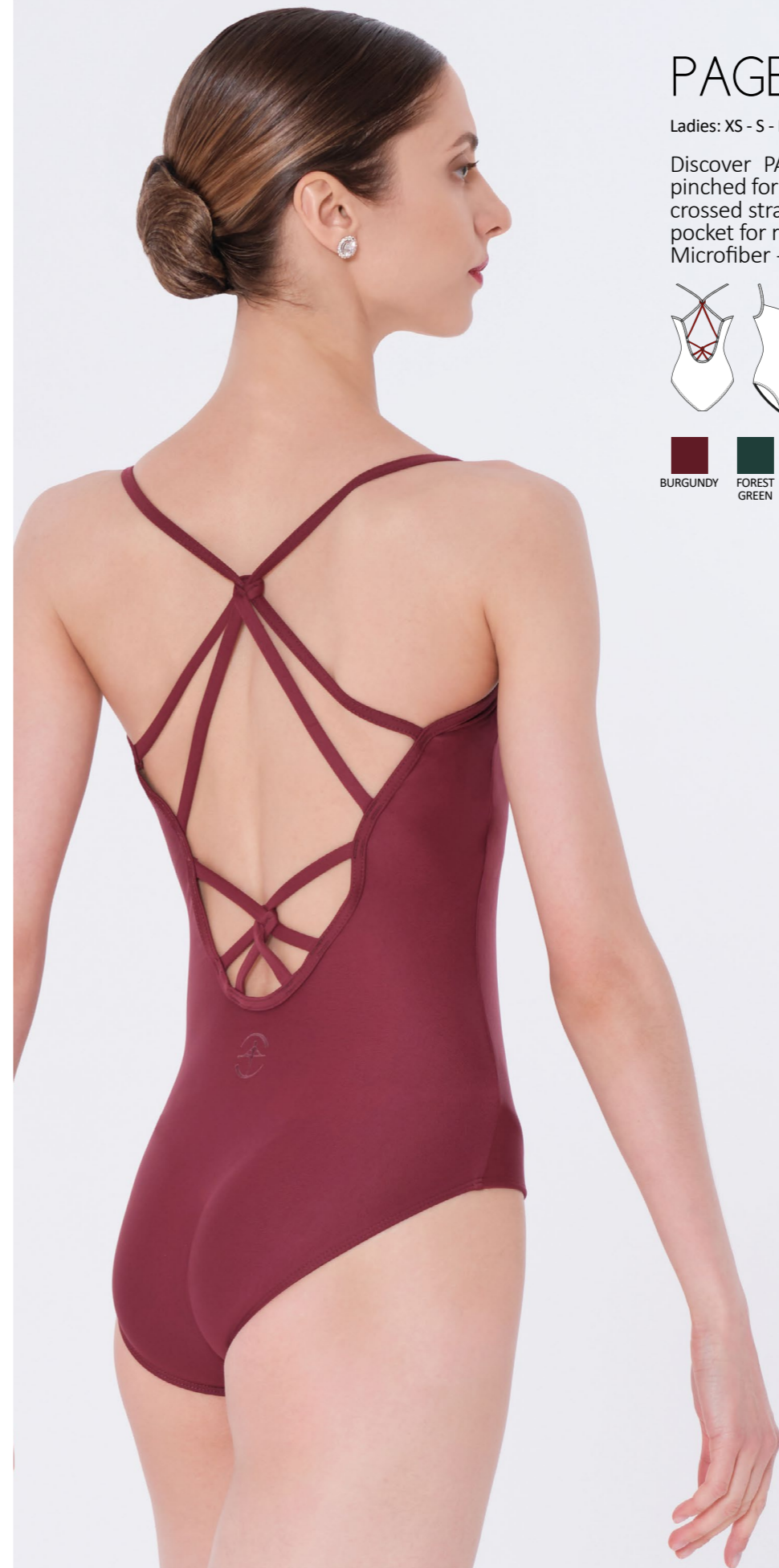


REMOVABLE BRA INSERT



Ladies: XS/S - M/L

Enjoy comfort and support with our removable bra insert for FlexiFit Support leotards. Discreet, flexible, and stage-ready. Polyester

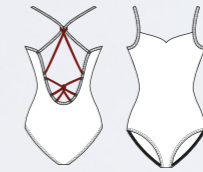


PAGE



Ladies: XS - S - M - L

Discover PAGE, featuring a sleek front with a front pinched for a feminine touch. The bold back has elegant crossed straps, and the front it includes a discreet chest pocket for removable bra inserts. Microfiber - Front lining



Wear Mei
FlexiFit Support

How To Use?



Fold the pad in half to facilitate its insertion through the opening on the side, inside the lining



Adjust the pads in the leotard at your convenience



MAUVE



Children: 8/10 - 10/12 - 12/14
Ladies: XS - S - M - L
** Available in adult size only*



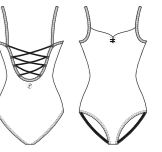
A new take on uniforms, Mauve features fashion straps on the back, and all business on the front. The best of two worlds combined in this basic/fashion piece. Pinched front, strappy back.
Microfiber - Front lining



ANGELIQUE



Children: 8/10 - 10/12 - 12/14
Ladies: XS - S - M - L
** Available in adult size only*



This camisole leotard balances simplicity and originality with a solid color front and classic pinch. The back features interlacing straps for secure hold.
Microfiber - Front lining



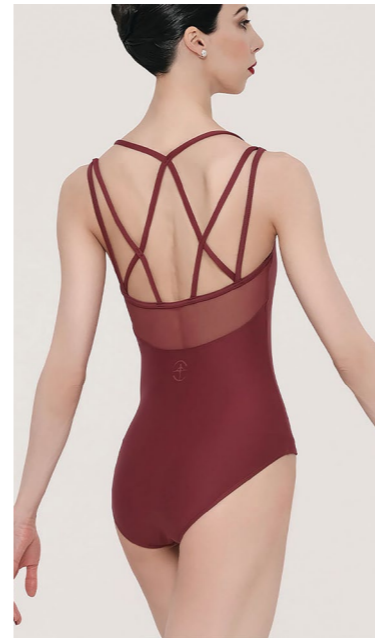
MARIE



Ladies: XS - S - M - L



A beautiful timeless look created by this basic/fashion leotard. Fun crisscross straps on the back with medium U-drop back. Pinched front.
Microfiber - Front lining



MELISSE



Children: 8/10 - 10/12 - 12/14
Ladies: XS - S - M - L
** Available in adult size only*



This ballet leotard features camisole straps, a classic pinched neckline, and a sporty back with transparent tulle and interlacing straps.
Microfiber - Stretch Tulle - Front lining



CAPRICE



Children: 8/10 - 10/12 - 12/14
Ladies: XS - S - M - L
** Available in adult size only*



Camisole strapped leotard with a clean front and a mesh back featuring thin straps plated on it.
Microfiber - Stretch Tulle - Front lining



GENTIANE

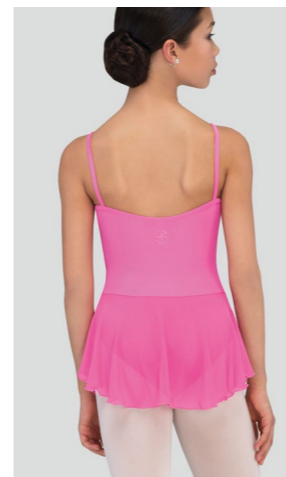


Ladies: XS - S - M - L

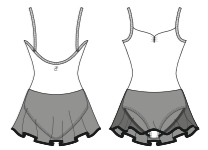


This elegant camisole leotard features a classic front with a pinch detail and a plunging back adorned with thin straps and tulle panels.
Microfiber - Stretch Tulle - Front lining





BALLERINE



Children: 4/6 - 6/8 - 8/10 - 10/12 - 12/14

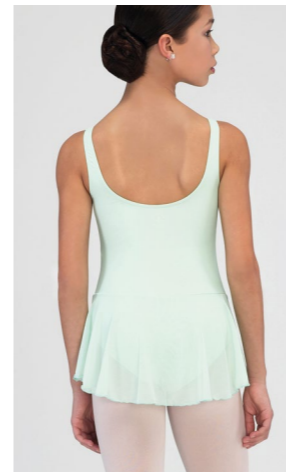
Ladies: XS - S - M - L

* Not available in sizes 4/6 and 6/8

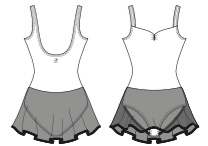
Microfiber basic, simple and elegant camisole dress, with a mid-back profile, front pinch and attached four-way stretch tulle skirt.

Available in 16 colors.

Microfiber - Stretch Tulle - Front lining



BALKALA



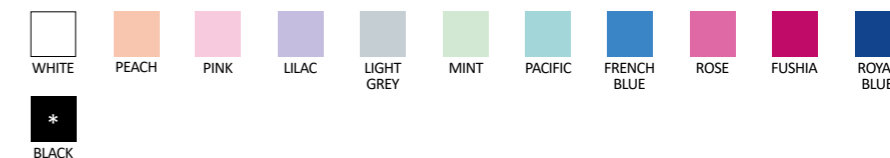
Children: 4/6 - 6/8 - 8/10 - 10/12 - 12/14

Ladies: XS - S - M - L

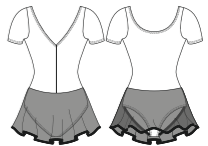
* Not available in sizes 4/6 and 6/8

Microfiber basic tank dress with front pinch. U-cut back and attached four-way stretch tulle skirt. Available in 12 colors.

Microfiber - Stretch Tulle - Front lining



ARDESIA

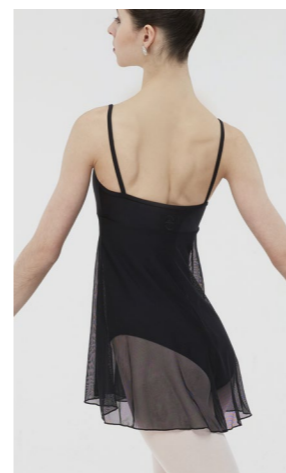


Children: 4/6 - 6/8 - 8/10 - 10/12 - 12/14

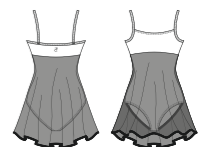
Ladies: XS - S - M - L

Short sleeve microfiber basic dress, featuring a modest, high back-cut and an attached four-way stretch tulle skirt. Available in 9 colors

Microfiber - Stretch Tulle - Front lining



AZUREA



Children: 6/8 - 8/10 - 10/12 - 12/14

Ladies: XS - S - M - L

This thin-strapped camisole dress, with empire mesh tulle overlay is perfect for the studio and will look absolutely dazzling on stage.

Microfiber - Stretch Tulle - Front lining



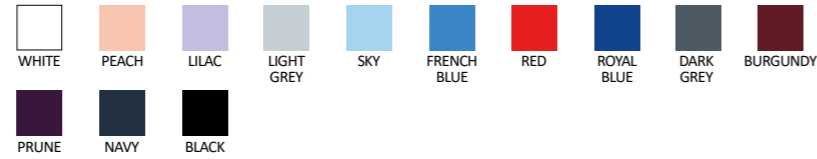


ALEGRO

Children: 4/8 - 8/12
Ladies: XS/S - M/L - XL/XXL**
** Available in Black only



Sheer four-way stretch tulle wrap skirt, featuring a stretch waistband and beautiful hem. Ideal for uniforms.
Stretch Tulle



DOLLY

Children: 4/8 - 8/12
Ladies: XS/S - M/L



This classic length faux wrap skirt is made from four-way stretch mesh with exclusive Wear Moi hem.
Stretch Tulle



DELIA

Children: 4/8 - 8/12
Ladies: XS/S - M/L



A longer style faux wrap skirt. Beautiful four-way stretch mesh and signature Wear Moi hem.
Stretch Tulle



DAPHNE

Children: 4/8 - 8/12
Ladies: XS/S - M/L
* Not available in sizes 4/8

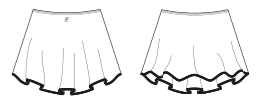


Sheer four-way stretch tulle pull on skirt features a color-matched elastic waistband. Length of the skirt depends on size.
Stretch Tulle



MAGDA

Children: 4/8 - 8/12
Ladies: XS/S - M/L
* Not available in sizes 4/8

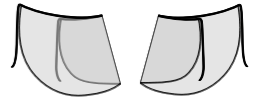


A 6 cm addition to our most popular skirt, Daphne, makes this four-way stretch mesh pull on skirt a must have.
Stretch Tulle



APOLO

Ladies: XS/S - M/L

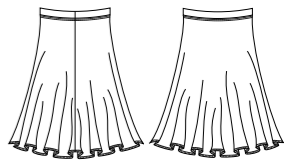


A long wrap skirt for ladies, constructed of beautiful four-way stretch mesh and a flexible waist band. Perfect for adults and teachers.
Stretch Tulle



FADO

Children: 8/10 - 10/12
Ladies: XS/S - M/L

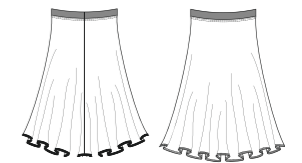


Below the knee character skirt. Soft microfiber full circle skirt with an elastic waistband.
Microfiber



MELINA

Children: 8/12
Ladies: XS/S - M/L - XL/XXL

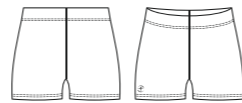


This knee-length transparent tulle skirt with a microfiber waistband adds smooth, elegant movement to your rehearsal look.
Stretch Tulle - Microfiber



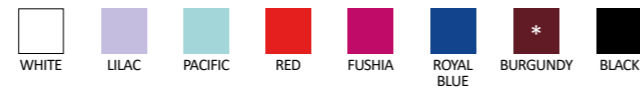


GIPSY

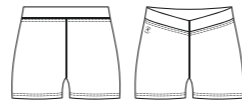


Children: 4/6 - 6/8 - 8/10 - 10/12
Ladies: XS - S - M - L - XL** - XXL**
** Not available in sizes 4/6 and 6/8*
*** Available in black only*

Gipsy short features soft microfiber elastane fabric and a comfortable elastic waistband.
Microfiber



MACARON

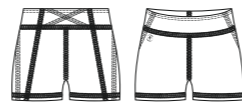


Children: 6/8 - 8/10 - 10/12
Ladies: XS - S - M - L

These hotpant shorts provide a flattering silhouette in the studio or on stage.
Microfiber



ARIELLE



Children: 6/8 - 8/10 - 10/12
Ladies: XS - S - M - L

Booty shorts that fit at the natural waistline. Perfect for any dance style.
Microfiber





AZTEC

Children: 8/10 - 10/12
Ladies: XS - S - M - L

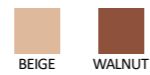
Un-lined camisole undergarment, designed to provide additional coverage and support. Equipped with clear, detachable straps. Soft Microfiber- Cotton-lined gusset



ALIAS

Children: 8/10 - 10/12
Ladies: XS - S - M - L

Nude pull-on athletic bra, with detachable clear straps. Soft Microfiber



ADELA

Children: 8/10 - 10/12 - 12/14
Ladies: XS - S - M - L

Comfortable high-waisted brief with soft elastic at the waist and elastic finishes on the thighs. Soft Microfiber- Cotton-lined gusset



AKIRA

Ladies: XS - S - M - L

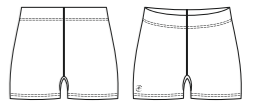
Dance bra, featuring stretch mesh detail, and clear convertible straps. Soft Microfiber - Stretch Tulle



ANDESITE

Children: 8/10 - 10/12
Ladies: XS - S - M - L

Basic microfiber short undergarment, offering a gusset for maximum flexibility. Soft Microfiber



AELIS

Ladies: XS - S - M - L

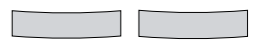
Comfortable thong for dancers, thin four-way stretch mesh and soft microfiber help this undergarment disappear under any leotard or costume piece. Soft Microfiber - Stretch Tulle - Cotton-lined gusset



DIV117

Children: 4/6 - 6/8 - 8/10 - 10/12 - 12/14
Ladies: XS/S - M/L

Accentuate your waistline with our stretchy microfiber belt, available in 28 colors to match your dance outfit. The perfect accessory to showcase your silhouette. Microfiber



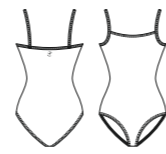


Collection PREMIÈRE

Microfiber



CONCERTO

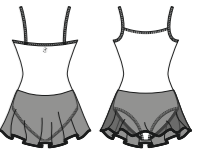


Children: 2/4 - 4/6 - 6/8 - 8/10 - 10/12 - 12/14
Ladies: XS - S - M - L - XL

Classic camisole leotard with scoop neck front and back and ballet cut legline. Available in many colors.
Microfiber - Front lining



BAGATELLE



Children: 2/4 - 4/6 - 6/8 - 8/10 - 10/12 - 12/14
Ladies: XS - S - M - L - XL

Skirted leotard with camisole top, scoop neck, and ballet cut legline. Features an attached tulle skirt.
Microfiber - Stretch Tulle - Front lining



CABRIOLE



Children: 2/4 - 4/6 - 6/8 - 8/10 - 10/12 - 12/14
Ladies: XS - S - M - L - XL

Classic tank leotard with high scoop neck front and back, available in various colors.
Microfiber - Front lining



FANTASIE

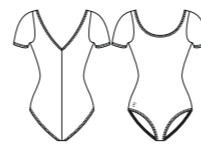


Children: 2/4 - 4/6 - 6/8 - 8/10 - 10/12 - 12/14

Skirted leotard with long sleeves and scoop neck, featuring a ballet cut legline and attached tulle.
Microfiber - Stretch Tulle - Front lining

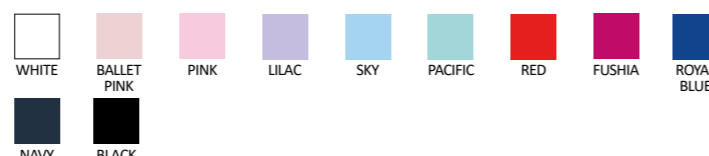


PIROUETTE



Children: 2/4 - 4/6 - 6/8 - 8/10 - 10/12 - 12/14
Ladies: XS - S - M - L - XL

Short-sleeved leotard with scoop neck and ballet cut legline.
Microfiber - Front lining



ARABESQUE



Children: 2/4 - 4/6 - 6/8 - 8/10 - 10/12 - 12/14
Ladies: XS - S - M - L - XL

3/4 length-sleeved leotard with round neckline and ballet cut legline.
Microfiber - Front lining





PAVANE



Ladies: XS - S - M - L - XL

Camisole leotard with pinched sweetheart neckline and princess seams. Features moderate legline and double-stitched seams. Cotton - Elastane - Front lining



NAVY



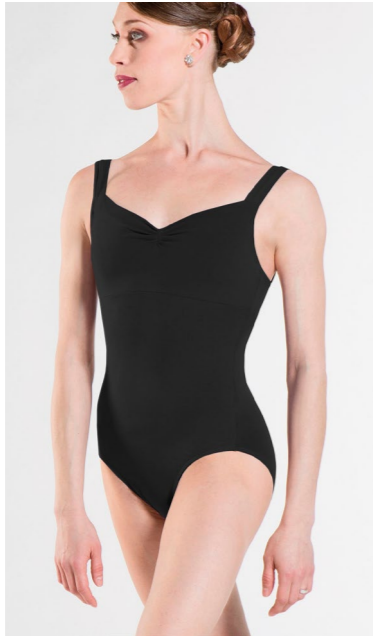
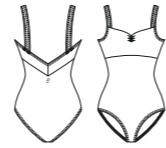
BLACK

GLISSADE



Ladies: XS - S - M - L - XL

Leotard with wide straps and sweetheart neckline, featuring princess seams and empire waist cut. Cotton - Elastane - Front lining



NAVY



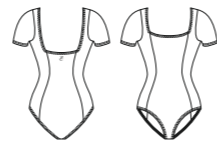
BLACK

REVERENCE



Ladies: XS - S - M - L - XL

Short-sleeved leotard with square neckline and princess seams. Features a moderate legline and double-stitched seams. Cotton - Elastane - Front lining



NAVY



BLACK

Collection PREMIÈRE Cotton



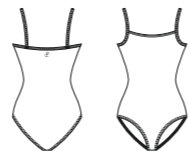


PRELUDE



Children: 2/4 - 4/6 - 6/8 - 8/10 - 10/12 - 12/14
Ladies: XS - S - M - L - XL

Camisole leotard with scoop neck and ballet cut legline, featuring double-stitched seams for durability.
Cotton - Elastane - Front lining

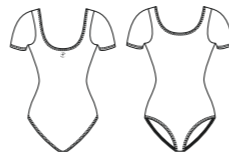


OPERA



Children: 2/4 - 4/6 - 6/8 - 8/10 - 10/12 - 12/14
Ladies: XS - S - M - L - XL

Short-sleeved leotard with scoop neck and ballet cut legline, perfect for studio work.
Cotton - Elastane - Front lining



SARABANDE



Children: 2/4 - 4/6 - 6/8 - 8/10 - 10/12 - 12/14
Ladies: XS - S - M - L - XL

*** Only available in child sizes*

Long-sleeved leotard with scoop neck and ballet cut legline, providing warmth in the studio.
Cotton - Elastane - Front lining

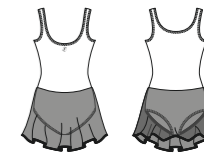


ENTRECHAT



Children: 2/4 - 4/6 - 6/8 - 8/10 - 10/12 - 12/14

Skirted tank leotard with scooped neckline and ballet cut legline. Features an attached tulle skirt.
Cotton - Elastane - Stretch Tulle - Front lining

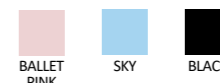
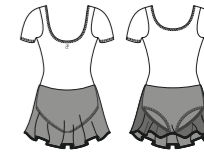


ADAGE



Children: 2/4 - 4/6 - 6/8 - 8/10 - 10/12 - 12/14

Skirted leotard with short sleeves and scoop neck, featuring an attached tulle skirt.
Cotton - Elastane - Stretch Tulle - Front lining

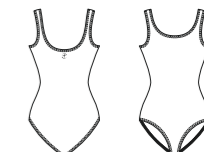


ETUDE



Children: 2/4 - 4/6 - 6/8 - 8/10 - 10/12 - 12/14
Ladies: XS - S - M - L - XL

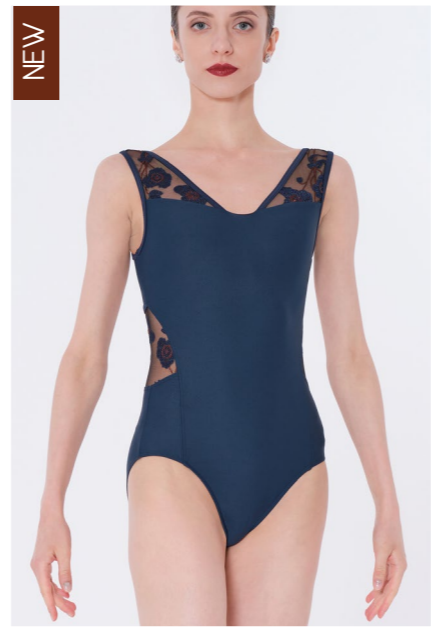
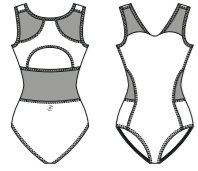
Tank leotard with scoop neck front and modest scoop back, featuring ballet cut legline and double-stitched seams.
Cotton - Elastane - Front lining



PETUNIA

Ladies: XS - S - M - L

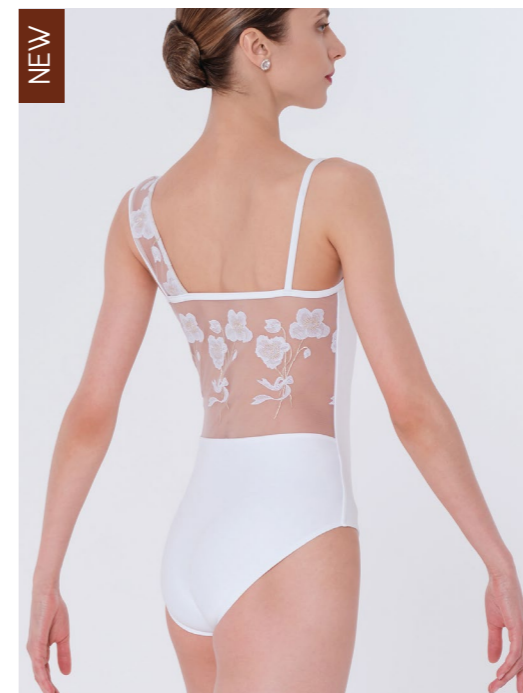
Leotard with wide straps, embroidered tulle inserts, and a flattering sweetheart neckline with racerback. Microfiber - Embroidered Stretch Tulle - Front lining



Collection Atelier des Fleurs



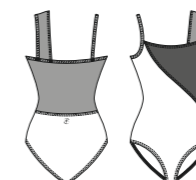
*Capture the timeless beauty of flowers,
thus adding a unique touch to your style.*



IXORA

Ladies: XS - S - M - L

Leotard with wide embroidered tulle straps, a classic neckline, and floral tulle from chest to back. Available in four elegant tones. Microfiber - Embroidered Stretch Tulle - Front lining

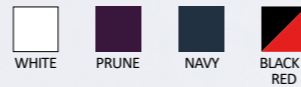




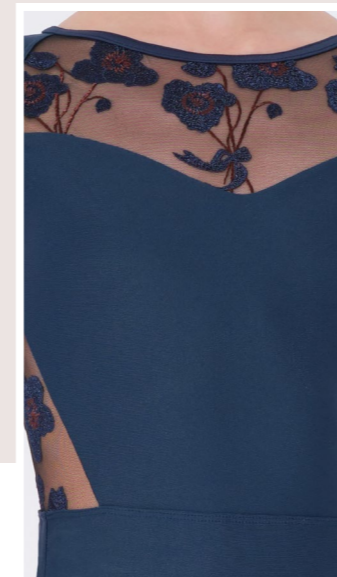
MUSCARI

Ladies: XS - S - M - L

Leotard with short sleeves, sweetheart neckline, and floral embroidered tulle inserts. Perfect for stylish dancers. Microfiber - Embroidered Stretch Tulle - Front lining



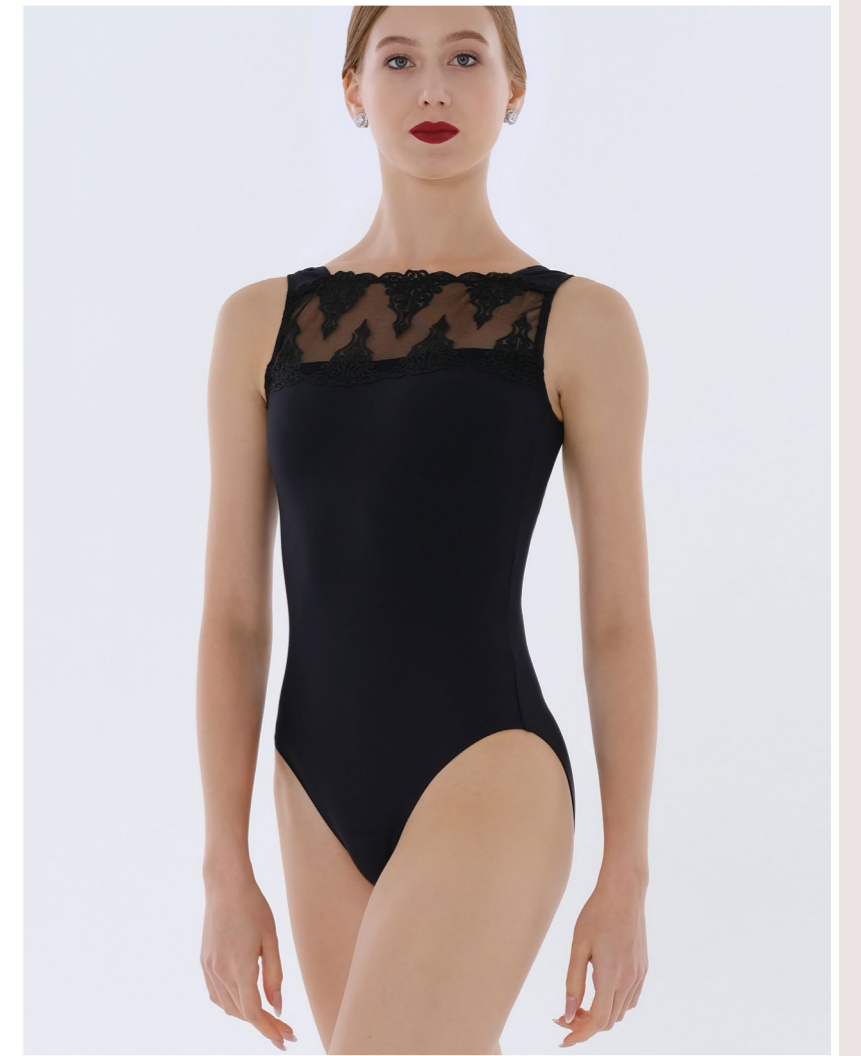
Welcome to **the sophisticated universe of our ATELIER DES FLEURS collection**, where each leotard evokes a true floral symphony.



Collection Damasco

Each leotard tells you a story from afar, where every dance step transports you to distant lands.

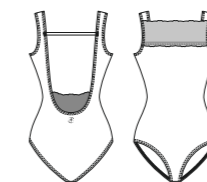


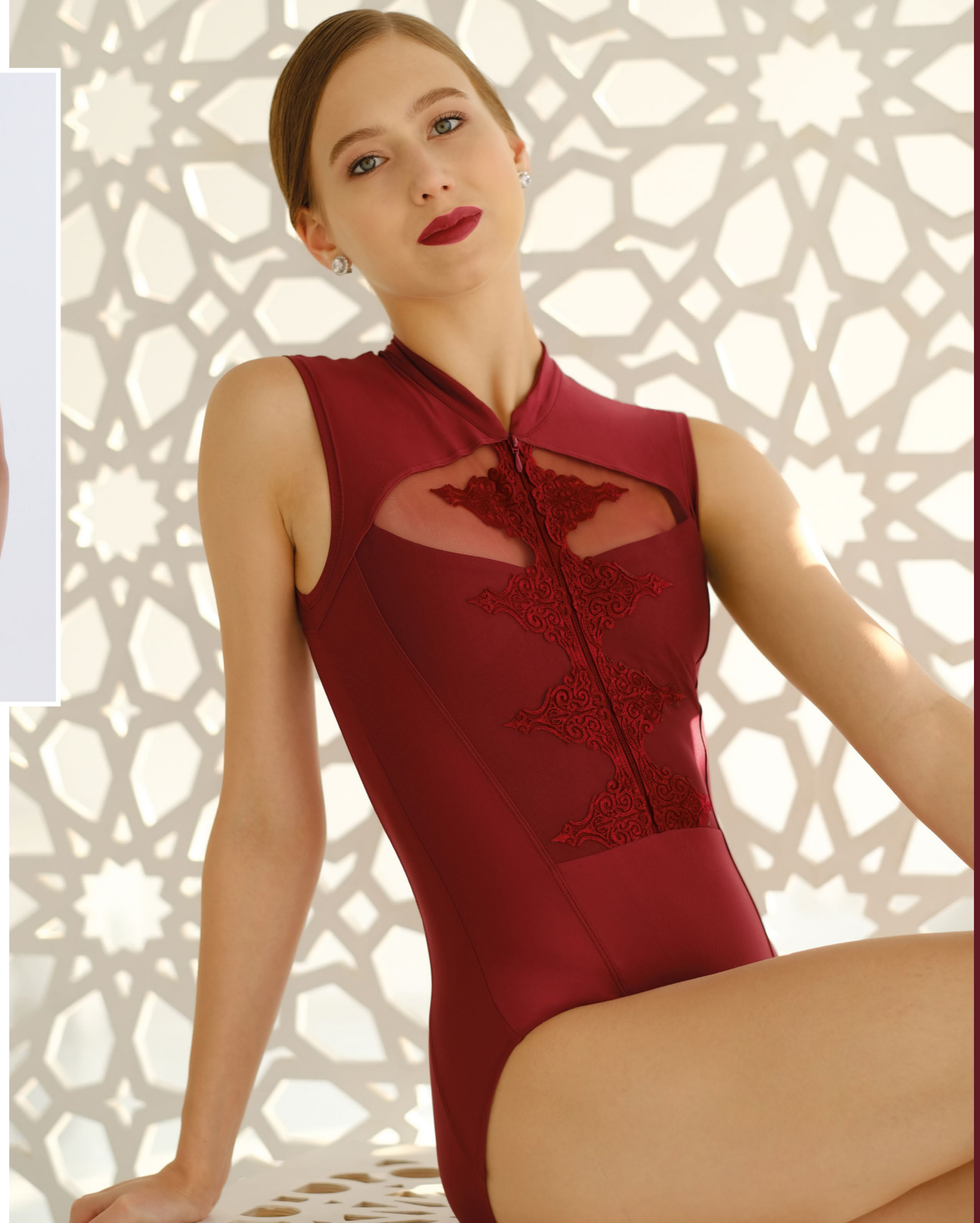


BELLE

Ladies: XS - S - M - L

Tank leotard featuring geometric strap detailing and embroidered tulle for a bold, unique look. The boat neckline with a scalloped tulle edge and deep embroidered backline enhance the dancer's silhouette. Available in five rich tones. Microfiber - Embroidered Stretch Tulle - Front lining



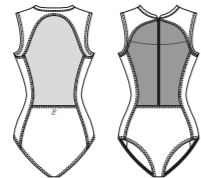


MEGARA

Ladies: XS - S - M - L

Cap-sleeved leotard featuring a mock neck with a zipper, embroidered tulle on the bust, and transparent cutouts on the back for a delicate yet original design. Ideal for both training and performance, available in three rich tones.

Microfiber - Embroidered Stretch Tulle - Stretch Tulle - Front lining



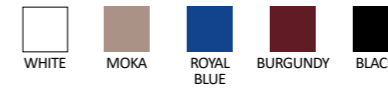
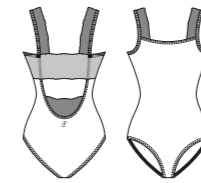
ROYAL BLUE BURGUNDY BLACK



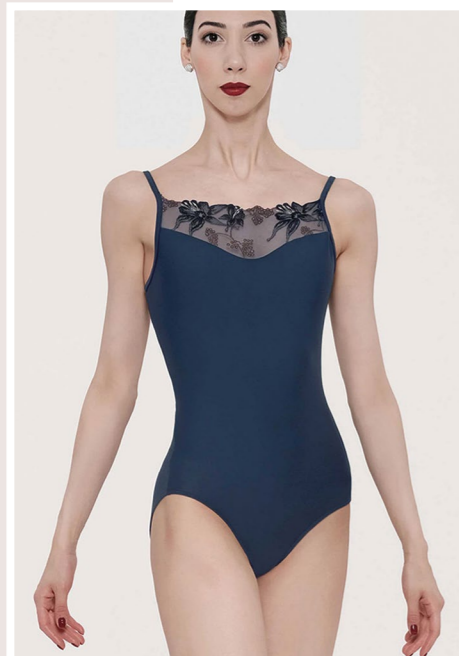
AMINA

Ladies: XS - S - M - L

Wide straps leotard with a two-fabric design offer both beauty and support. With a modest front neckline and a deep V-back, it features tone-on-tone embroidered tulle for a couture look. Ideal for training and performance, available in five rich tones. Microfiber - Embroidered Stretch Tulle - Front lining



Collection Ecrin Bleu

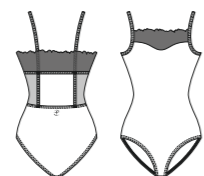


JASMIN

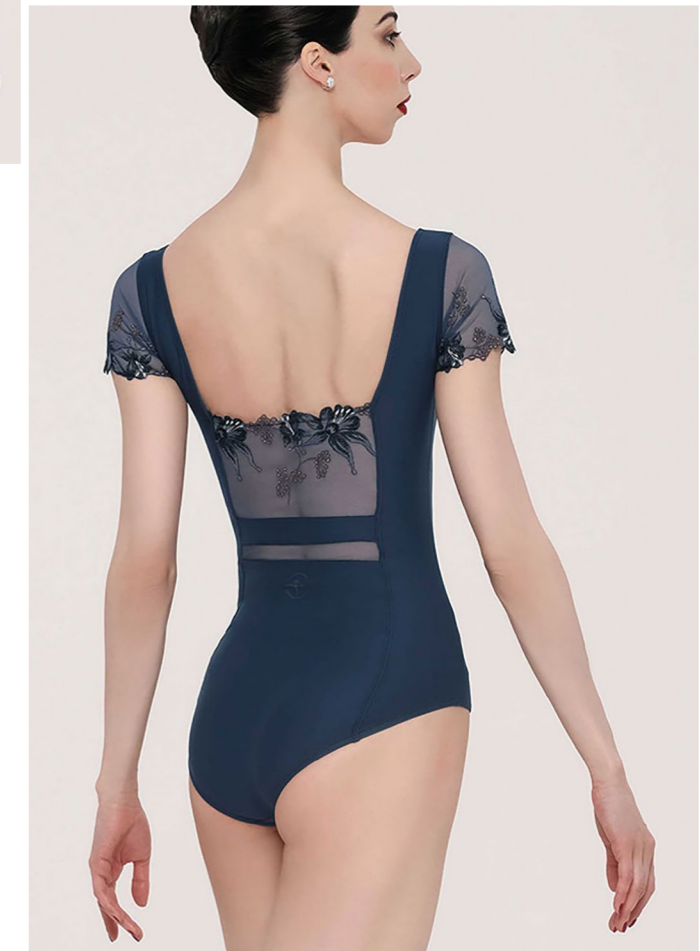
Ladies: XS - S - M - L

This camisole leotard features embroidered tulle panels with sea flower details on the back and above the sweetheart neckline for a touch of transparency. Side tulle panels and a horizontal back strap enhance the design. It combines elegance with comfort.

Microfiber - Embroidered Stretch Tulle - Stretch Tulle - Front lining



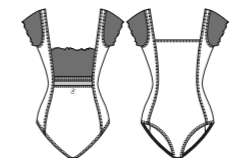
NAVY /
NIGHT BLUE



LISERON

Ladies: XS- S- M- L

Leotard with embroidered stretch tulle on the back, shoulders, and waist, featuring a square neckline and structured design. Microfiber - Embroidered Stretch Tulle - Stretch Tulle - Front lining



NAVY / NIGHT BLUE



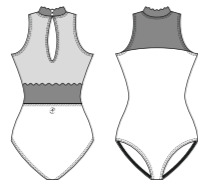
Collection Ruban



AKARSO

Ladies: XS - S - M - L

Halter ballet leotard with a scalloped collar, back buttons, and a transparent teardrop opening. Embroidered tulle accents the waist.
Microfiber - Embroidered Stretch Tulle - Stretch Tulle - Front Lining



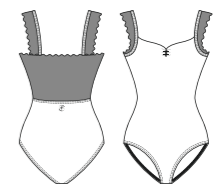
BLACK



SWEETPEA

Ladies: XS - S - M - L

Leotard in elastane microfiber and embroidered stretch tulle with wide straps and a decorative back. Scalloped edges and pinched front. Microfiber - Embroidered Stretch Tulle - Front Lining



BLACK

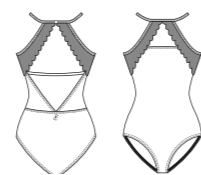


AEGLOS

Ladies: XS - S - M - L

This microfiber and stretch tulle leotard features a halter-top with a delicate button closure at the back. The embroidered tulle on the bust evokes the wings of the black swan from «Swan Lake». Its geometric back design and second-skin fit ensure total freedom of movement.

Microfiber - Embroidered Stretch Tulle - Front lining

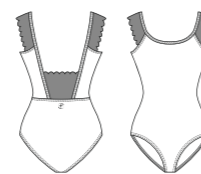


PEYA

Ladies: XS - S - M - L

This leotard in elastane microfiber and embroidered stretch tulle boasts a unique design. It has transparent tulle sleeves that call to mind the wings of the black swan in «Swan Lake».

Microfiber - Embroidered Stretch Tulle - Front lining

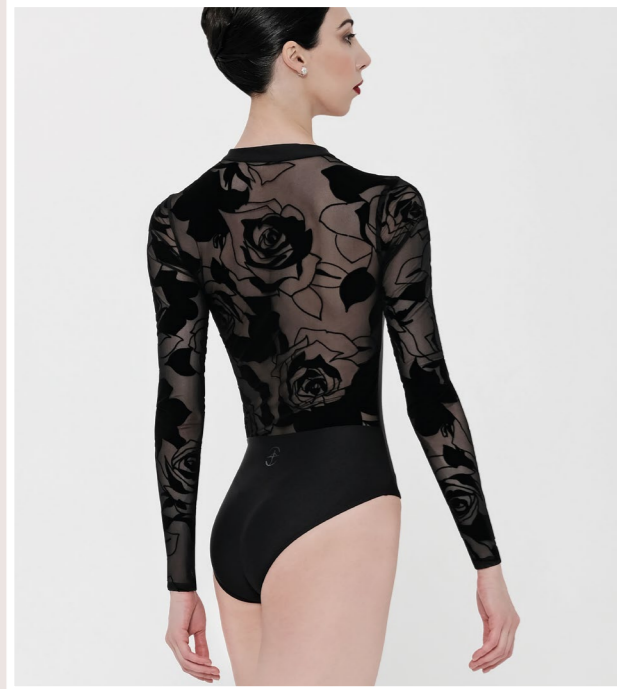


Collection Sublime

FELICITE

Ladies: XS - S - M - L

Fancy high-neck long-sleeved leotard with front zipper. Sheer back, sleeves, and shoulders reveal the skin and contour the body with large flowers, like a tattoo. Microfiber - Flocked Stretch Tulle - Front lining

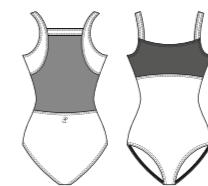




LAIKA

Ladies: XS - S - M - L

Fancy wide straps leotard cut-out along the bust, detailed with rose pattern flocked tulle front yoke. The back of the leotard is made of sheer stretch tulle, attached by solid color microfiber bands. Microfiber - Flocked Stretch Tulle - Front lining



*Opt for refined
arabesques*

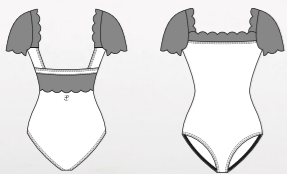




EMMA

Ladies: XS - S - M - L

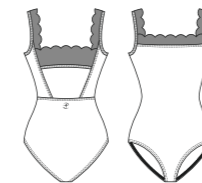
Chic cap sleeve leotard in flocked light beige mesh with an open square mid-back and lace-like panel. Classic ballet leg cut. Microfiber - Flocked Stretch Tulle - Front Lining



ARLETTY

Ladies: XS - S - M - L

Tank-style leotard in lace-like flocked mesh with back support that can hide a nude bra. Open lower back adds a unique touch. Microfiber - Flocked Stretch Tulle - Front lining



Collection **Envol**



*Grace and Purity. Let yourself
be carried away by **the softness**
of our delicate **ENVOL**
collection.*

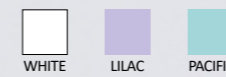
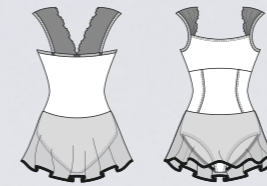




KAMAE

Ladies: XS - S - M - L

KAMAE dress, a skirted version of the GEMMA leotard, features wide straps with embroidered lace and front seams for enhanced fluidity.
Microfiber - Embroidered Stretch Tulle - Stretch Tulle - Front Lining





GEMMA

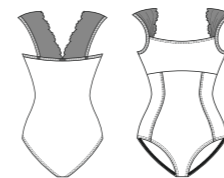
Children: 6/8 - 8/10 - 10/12 - 12/14

Ladies: XS - S - M - L

*not available in children size

Tank leotard with wide straps and embroidered lace. Princess seams shape the silhouette, and the straight neckline provides support.

Microfiber - Embroidered Stretch Tulle - Front Lining



WHITE



LILAC



PACIFIC



BLACK/
BRONZE



BLACK/
BLUE



Grace and Purity. Let yourself be carried away by the softness of our delicate ENVOL collection.



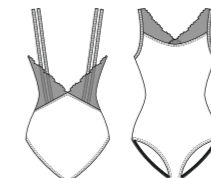
NEW



REINE

Children: 6/8 - 8/10 - 10/12 - 12/14
Ladies: XS - S - M - L
*not available in children size

Leotard in embroidered tulle and microfiber. Features double straps, tulle-accented neckline, and a V-back.
Microfiber - Embroidered
Stretch Tulle - Front Lining

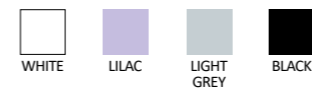
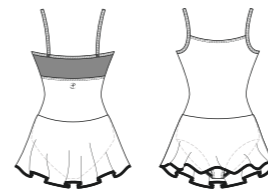




CAMELIA

Children: 4/6 - 6/8 - 8/10 - 10/12 - 12/14
Ladies: XS - S - M - L

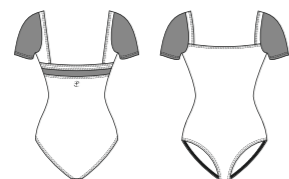
Printed microfiber leotard with a comfortable fit and shapely silhouette. Features a transparent stretch tulle back panel and camisole straps. The floral pattern evokes a lush garden.
Printed Microfiber - Stretch Tulle -
Front Lining



ACANTE

Children: 4/6 - 6/8 - 8/10 - 10/12 - 12/14
Ladies: XS - S - M - L

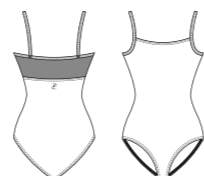
Short-sleeved leotard with a straight neckline in soft microfiber featuring a floral print and transparent stretch tulle on the sleeves and back. Creates a curved silhouette.
Printed Microfiber - Stretch Tulle - Front Lining



COLCHIC

Children: 4/6 - 6/8 - 8/10 - 10/12 - 12/14
Ladies: XS - S - M - L

Soft microfiber ballet leotard with floral print, classic front, and stretch tulle back. Camisole style shapes your silhouette.
Printed Microfiber - Stretch Tulle - Front lining

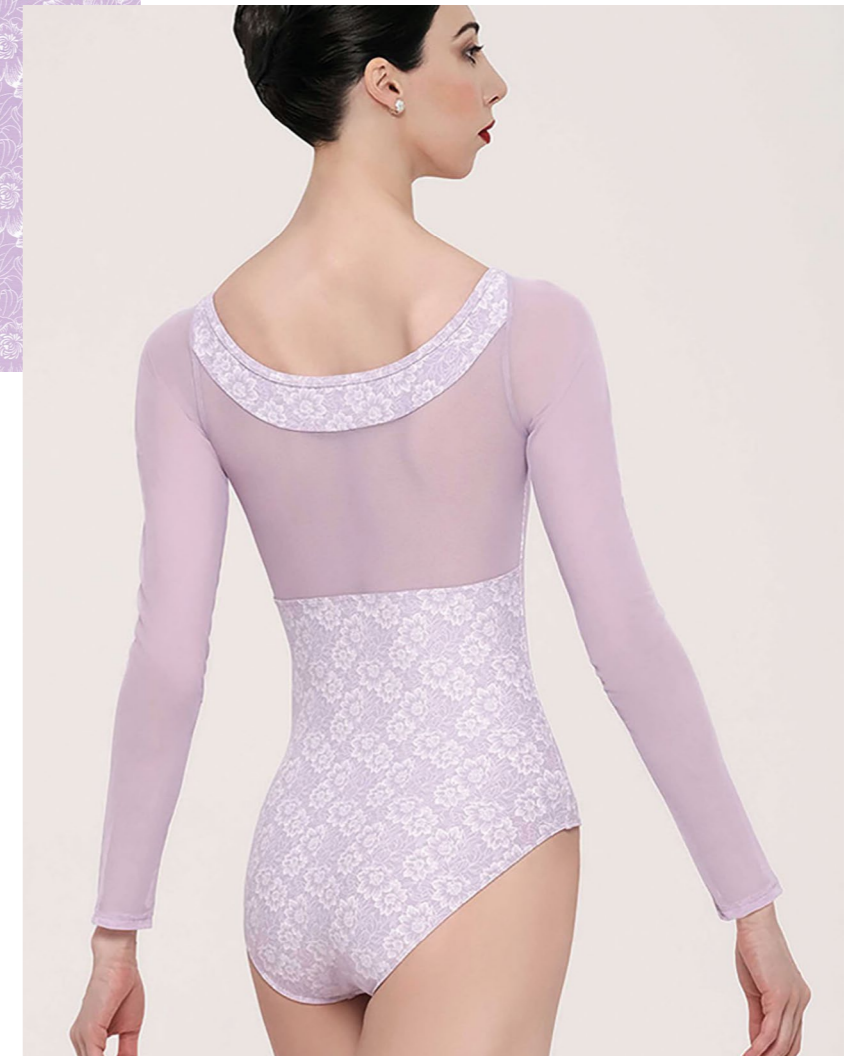
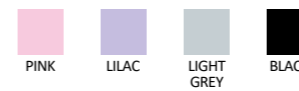




FRESIA

Ladies: XS - S - M - L

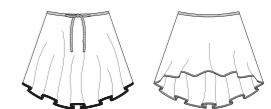
Long-sleeved leotard with a wide neckline in printed microfiber, featuring transparent stretch tulle on the back and sleeves. Printed Microfiber - Stretch Tulle - Front Lining



LONICERA

Ladies: XS/S - M/L

Lonicera is a medium-length microfiber skirt with a floral pattern, longer at the back. It features a bow at the back of the waistband and offers soft, comfortable wear. Printed Microfiber



Collection Mademoiselle



CIRNUM

Children: 6/8 - 8/10 - 10/12 - 12/14
Ladies: XS - S - M - L

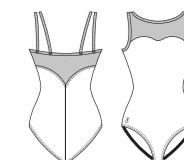


Floral-patterned leotard with a tulle-covered microfiber panel for bust support. The back reveals skin with tulle extending to the waist.
Microfiber - Embroidered Stretch Tulle - Front Lining



BELMINE

Children: 6/8 - 8/10 - 10/12 - 12/14
Ladies: XS - S - M - L



Double-straped camisole leotard with embroidered tulle connecting the sweetheart neckline and tapered back. Made from elastane microfiber.
Microfiber - Embroidered Stretch Tulle - Front lining



LOBELIA

Children: 6/8 - 8/10 - 10/12 - 12/14
Ladies: XS - S - M - L



Double-straped camisole leotard with embroidered tulle connecting the sweetheart neckline and tapered back. Made from elastane microfiber.
Microfiber - Embroidered Stretch Tulle - Front lining



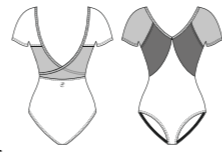
*Embodies the grace of a ballerina
with the delicateness of its colors,
the tulle and the floral pattern*





MIOSOTIS

Children: 6/8 - 8/10 - 10/12 - 12/14
Ladies: XS - S - M - L

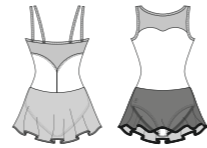


Short-sleeved leotard with V-shape front and back, crossover tulle panel, and embroidered tulle over the bust.
Microfiber - Embroidered Stretch Tulle - Front Lining



ALYSON

Children: 6/8 - 8/10 - 10/12 - 12/14
Ladies: XS - S - M - L



Skirted leotard in elastane microfiber with double straps and transparent tulle panels. The two-fabric skirt features transparent tulle in front and embroidered tulle in back.
Microfiber - Embroidered Stretch Tulle - Stretch Tulle - Front Lining



CYPELLA

Ladies: XS/S - M/L



Asymmetrical ballet skirt, short in front and medium in back, made from embroidered stretch tulle. Finished waistband with bow at the back.
Microfiber - Embroidered Stretch Tulle



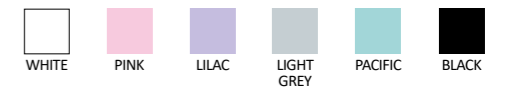
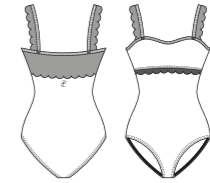




ERINE

Children: 6/8 - 8/10 - 10/12 - 12/14
Ladies: XS - S - M - L

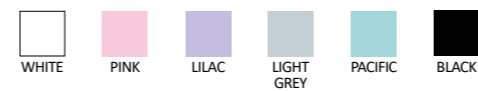
Tank leotard with a scalloped trim lace overlay.
Microfiber - Stretch Lace - Front lining



EVIDENCE

Children: 6/8 - 8/10 - 10/12 - 12/14
Ladies: XS - S - M - L

A tank-style camisole leotard with plunging V-shaped back, with a delicate lace trim. Microfiber - Stretch Lace - Front lining

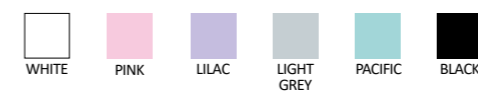
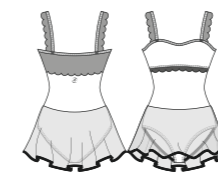




ETINCELLE

Children: 6/8- 8/10- 10/12- 12/14
Ladies: XS- S- M- L

A tank-style dress featuring the elegant scalloped lace trim overlay and four-way stretch tulle skirt.
Microfiber - Stretch Lace - Stretch Tulle - Front lining

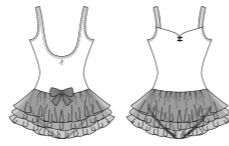




NOISETTE

Children: 2/4 - 4/6 - 6/8 - 8/10 - 10/12 - 12/14

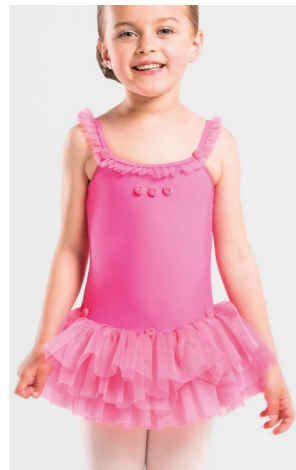
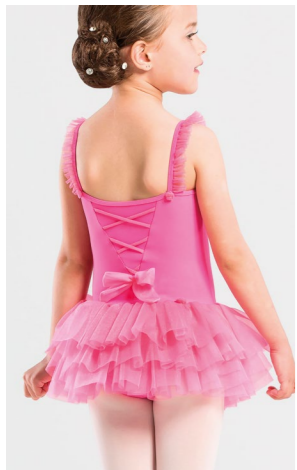
A pinch-front children's tutu dress with three layers of tulle and bow accent. This beautiful dress is perfect for the youngest dancer. Microfiber - Sparkling Tulle - Front lining



NUAGE

Children: 2/4 - 4/6 - 6/8 - 8/10 - 10/12 - 12/14

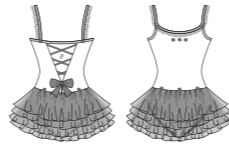
Beautiful pull-over children's tutu with three layers of tulle and a bow decal. Microfiber - Sparkling Tulle



PRALINE

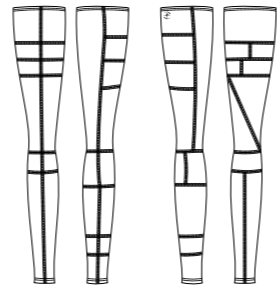
Children: 2/4 - 4/6 - 6/8 - 8/10 - 10/12 - 12/14

This tutu is a stylish and classy take on a kid's fashion. This four-layer tutu dress offers soft ruffle, mini roses and crisscross detail. Any little ballerina would love this dress. Microfiber - Sparkling Tulle - Front lining





SUPERBE



- COLOR 6: BLACK GREY WHITE
- COLOR 7: PEACOCK BLUE OCEAN WHITE
- COLOR 8: BLACK AMETHISTE BYZANTINE

Children: 8/12
Ladies: XS/S - M/L

Eye-catching patchwork design that offers extreme comfort. These leg warmers are sure to become a favorite.
Knitted Acrylic Elasthan



TULIPE



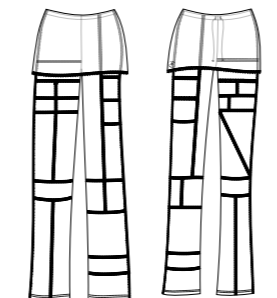
- COLOR 6: BLACK GREY WHITE
- COLOR 7: PEACOCK BLUE OCEAN WHITE
- COLOR 8: BLACK AMETHISTE BYZANTINE

Children: 8/10 - 10/12
Ladies: XS - S - M - L

Stylish stretch knit crop-top featuring comfortable patchwork design and scoop neckline.
Knitted Acrylic Elasthan



SYRMA



- COLOR 6: BLACK GREY WHITE
- COLOR 7: PEACOCK BLUE OCEAN WHITE
- COLOR 8: BLACK AMETHISTE BYZANTINE

Children: 8/10 - 10/12
Ladies: XS - S - M - L

Eye-catching patchwork design that offers extreme comfort and stretch. These fold-over boot-cut pants are perfect from street to studio.
Knitted Acrylic Elasthan

Wear Moi

Designed in France
WARM UP & ACTIVE WEAR



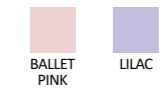


BERGAMOTE

Children: 4/6 - 6/8 - 8/10 - 10/12



Loose-fit pants with an elastic waistband and back bow, tapering at the calves for warmth and style.
Acrylic Elastane Knit - Mettalic Lurex



CALISSON

Children: 4/6 - 6/8 - 8/10 - 10/12



Cozy shorts with a soft waistband and back bow, offering elegance and comfort.
Acrylic Elastane Knit - Mettalic Lurex



GUIMAUVE

Children: 4/6 - 6/8 - 8/10 - 10/12

V-neck cardigan with puffed sleeves, ribbed cuffs, and a back drawstring for comfort and elegance.
Acrylic Elastane Knit - Mettalic Lurex



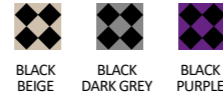


DANUBE

Ladies: XS - S - M - L

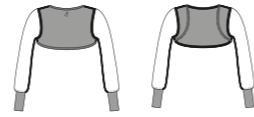


V-neck, long-sleeved top with soft diamond-pattern knit, one-tone sleeves, and adjustable drawstring. Ideal for layering with a leotard or warm-ups. Knitted acrylic wool

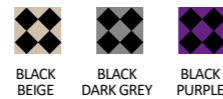


MELEZE

Ladies: XS - S - M - L

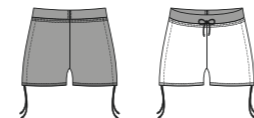


Lightweight knit shrug with asymmetrical diamond pattern, fitted front and fuller sleeves with wristbands. Perfect for ballet class warmth. Knitted acrylic wool

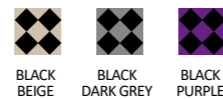


MAKALU

Ladies: XS - S - M - L



Two-tone knitted warm-up shorts with adjustable waist and side drawstring, tonal waist, and supportive back panel for stretching. Knitted acrylic wool



EREBUS

Ladies: One size

Lightweight, open-textured knit with a flowing style, perfect for draping around waist or shoulders during dance classes. Knitted acrylic wool



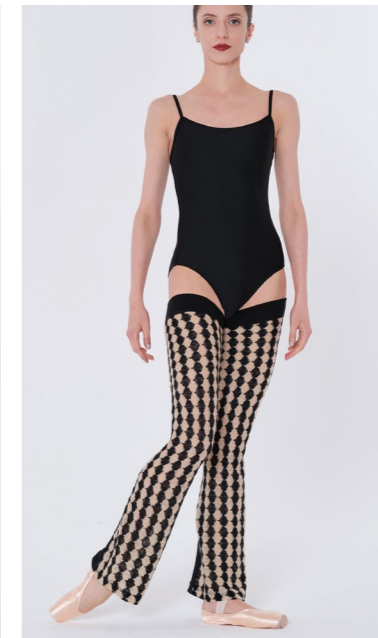
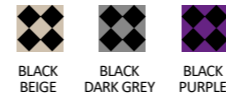


TAGE



Ladies: XS/S - M/L

Beautiful diamond-patterned legwarmers with a secure back band and elongating back trim, perfect for warm-ups. Knitted acrylic wool

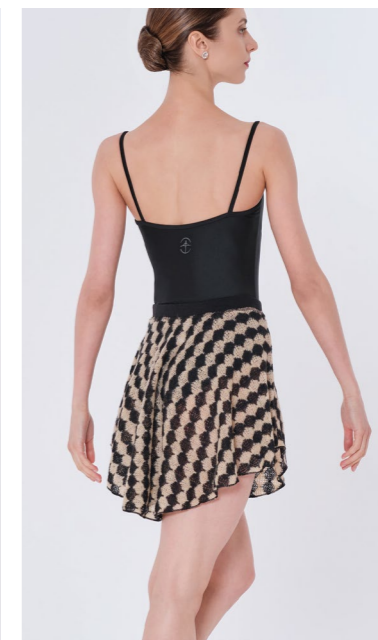
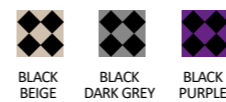


FILAO



Ladies: XS/S - M/L

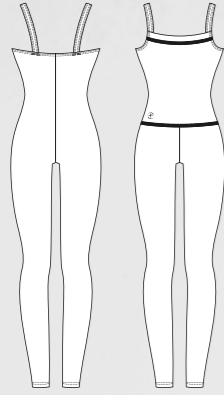
Flowing two-tone skirt with a shorter front and longer back for comfort and style. Knitted acrylic wool



CAPELLA

Children: 8/10 - 10/12
Ladies: XS - S - M - L

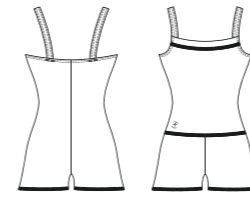
This warm up knit ankle length romper will keep you warm and comfortable in dance class.
Knitted Acrylic Elasthan



ALOES

Children: 8/10 - 10/12
Ladies: XS - S - M - L

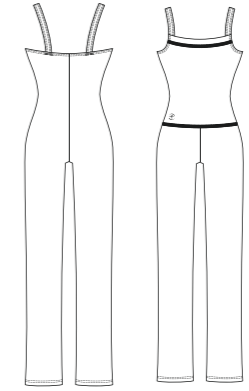
Our knitted romper is a versatile garment that can also be rolled down to the waist and worn as shorts.
Knitted Acrylic Elasthan



CALOU

Children: 8/10 - 10/12
Ladies: XS - S - M - L

Our knit boot-leg pant romper is a perfect addition to your class apparel.
Knitted Acrylic Elasthan

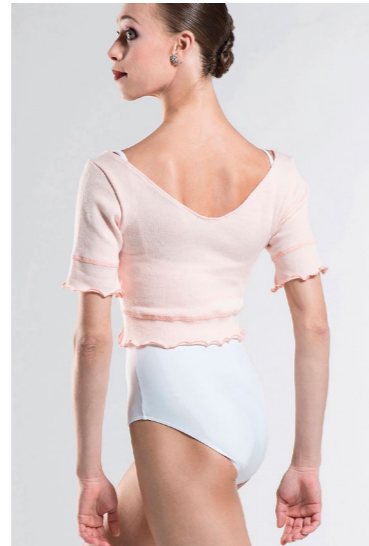




NAYA

Children: 8/10 - 10/12
Ladies: XS - S - M - L

Short sleeve crop top sweater with an eye-catching design and comfortable cut.
Knitted Acrylic Elasthan



CEYLAN

Children: 8/10 - 10/12
Ladies: XS - S - M - L

Acrylic warm-up shorts. Elastic on the waist for a secure fit.
Knitted Acrylic Elasthan



TIARA

Children: 8/10 - 10/12
Ladies: XS - S - M - L

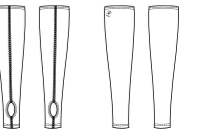
Gorgeous, warm and comfortable fold over shorts including a waist drawstring with a rolled hem.
Knitted Acrylic Elasthan



IZALIA

Children: 4/8 - 8/12
Ladies: XS/S - M/L

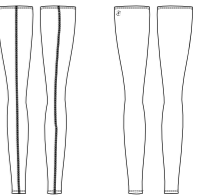
Short stirrup leg warmers.
Knitted Acrylic Elasthan



CRISTAL

Children: 8/12
Ladies: XS/S - M/L

Full length skinny fit leg warmers.
Soft and comfortable.
Knitted Acrylic Elasthan



CRYCALIDE

Children: 8/10 - 10/12
Ladies: XS - S - M - L

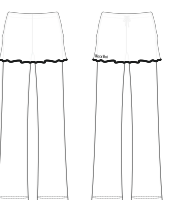
A unique and flattering sweater waistband folds over these warm tights with a drawstring waist.
Knitted Acrylic Elasthan



UTAMI

Children: 8/10 - 10/12
Ladies: XS - S - M - L

These warm up pants feature a boot cut style with a fold over waistband.
Knitted Acrylic Elasthan



Collection PREMIÈRE Knitwear

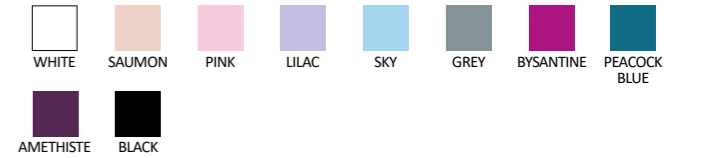


MENUET

Children: 4/6 - 6/8 - 8/10 - 10/12
Ladies: XS - S - M - L - XL



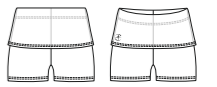
Classic full-sleeve wrap-around top with adjustable self-ties, ideal for layering over a leotard. Made from soft knitted fabric for comfort and a perfect fit. Knitted acrylic elastane



SONATE

Children: 4/6 - 6/8 - 8/10 - 10/12
Ladies: XS - S - M - L - XL

* Only available in adult sizes
** Only available in child sizes



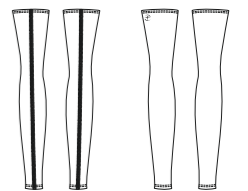
Soft, snug-fitting shorts with a ribbed fold-over waistband, adding warmth and texture to rehearsals. Designed to retain elasticity over time. Knitted acrylic elastane



ATTITUDE

Children: 4/8 - 8/12
Ladies: XS/S - M/L

* Only available in adult sizes
** Only available in child sizes



Classic leg warmers with a soft elastic cuff at the thighs, staying in place during intense rehearsals. Made from soft knitted fabric for comfort and a perfect fit. Attitude child: 12'' - 30 cm Attitude adult: 18'' - 45 cm Knitted acrylic elastane





IKITA



Children: 4/6 - 6/8 - 8/10 - 10/12
Ladies: XS - S - M - L



Simple, elegant, classic short camisole top with comfortable waistband.
Microfiber - Front lining



ANA



Children: 4/6 - 6/8 - 8/10 - 10/12
Ladies: XS - S - M - L



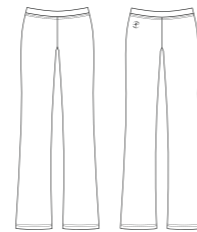
Simple, soft, microfiber camisole.
Microfiber - Front lining



IRIS



Children: 4/6 - 6/8 - 8/10 - 10/12
Ladies: XS - S - M - L



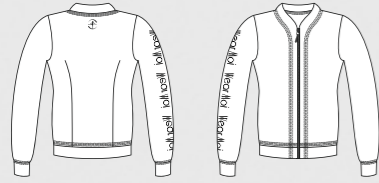
Classic U-cut jazz pants.
Comfortable elastic waist band and soft microfiber.
Microfiber



PATIENCE

Ladies: XS - S - M - L

Fitted jacket with zippered front, embellished with silver serigraphy on the right arm. Unlined. Double Viscose Elasthan Jersey



PIVOINE

Ladies: XS - S - M - L

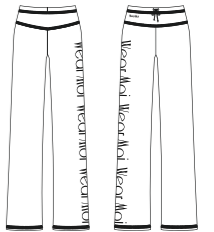
Soft hooded jacket with front zipper, silkscreen print on the right arm, and patch pockets. Unlined. Double Viscose Elasthan Jersey



PALOMINO

Ladies: XS - S - M - L

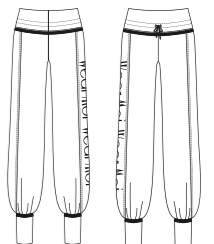
Straight cut pants with yokes, wide elastic waistband, and drawstring. Features topstitched hem and silkscreen print on the right leg. Double Viscose Elasthan Jersey



PANDORE

Ladies: XS - S - M - L

Wide jogging pants with ankle cuffs, lapel band waist with drawstring, and silkscreen print on the right leg. Double Viscose Elasthan Jersey



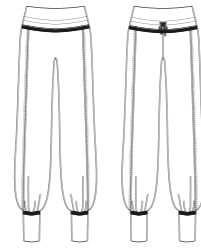


OPUS



Children: 6/8 - 8/10 - 10/12 - 12/14
Ladies: XS - S - M - L

Four-way stretch warm-up pants with fitted ankles and drawstring. Perfect for dancers or as a team uniform. Pair with Iliade jacket.
Double Viscose Elasthan Jersey

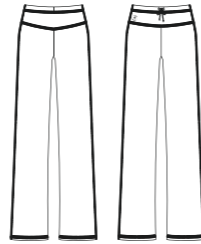


PENELOPE



Children: 6/8 - 8/10 - 10/12 - 12/14
Ladies: XS - S - M - L

Warm-up pants with elastic waist band and drawstring. Wide leg for a more relaxed and comfortable fit.
Double Viscose Elasthan Jersey



ILIADE



Children: 6/8 - 8/10 - 10/12 - 12/14
Ladies: XS - S - M - L

Four-way stretch warm-up jacket with front zip and dart seams, perfect for warmth between rehearsals. Pairs with Opus pants.
Double Viscose Elasthan Jersey



Wear Moi

Designed in France

MEN & BOYS

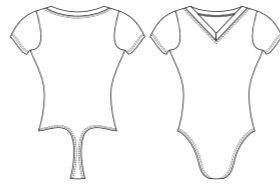




CENTAUR



Children: 4/6 - 6/8 - 8/10 - 10/12 - 12/14
Men: XS - S - M - L - XL



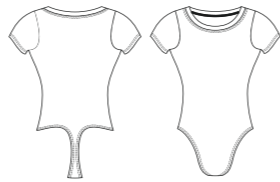
Short-sleeved men's leotard with a V-neck, no front cup, and a thong back for a seamless fit under tights. Made from elastane microfiber for maximum motion.
Microfiber



LUPIN



Children: 4/6 - 6/8 - 8/10 - 10/12 - 12/14
Men: XS - S - M - L - XL



This short-sleeved men's leotard features a round neckline with slits and is made from elastane microfiber for maximum comfort. The thong back is imperceptible under tights, ensuring no visible lines.
Microfiber





SOLO

Children: 4/6 - 6/8 - 8/10 - 10/12
Men: XS - S - M - L - XL

Heavyweight men footed tights with a ballet-style high waist.
Cotton Elasthan



ORION

Children: 4/6 - 6/8 - 8/10 - 10/12
Men: XS - S - M - L - XL

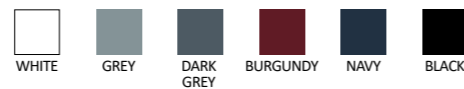
Heavy weight microfiber men's footed tights and a ballet waist.
Microfiber



HIDALGO

Children: 10/12
Men: XS - S - M - L - XL

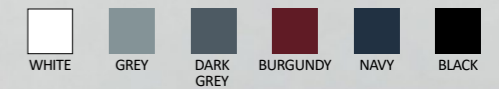
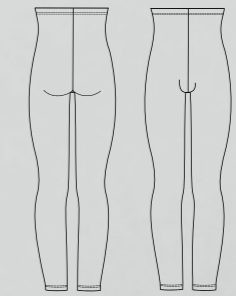
Heavyweight elastane convertible tights for men with a side opening for easy transition from footed to footless tights.
Microfiber



ALBAN

Children: 4/6 - 6/8 - 8/10 - 10/12
Men: XS - S - M - L - XL

Men's heavyweight elastane footless tights with reinforced inseam gusset.
Microfiber





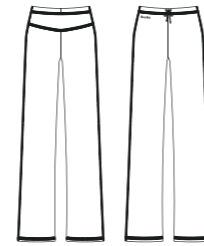
PRESTON



Children: 6/8 - 8/10 - 10/12 - 12/14
Men: XS - S - M - L

Men's warm-up pants with elastic waist band and drawstring. Wide leg for a more relaxed and comfortable fit.

Double Viscose Elasthan Jersey



NAVY BLACK



BELEM



Children: 6/8 - 8/10 - 10/12 - 12/14
Men: XS - S - M - L

Men's four-way stretch warm-up pants with fitted ankles and drawstring. Ideal for dancers and team uniforms. Pair with Malone jacket.

Double Viscose Elasthan Jersey



NAVY BLACK



MALONE



Children: 6/8 - 8/10 - 10/12 - 12/14
Men: XS - S - M - L

Men's four-way stretch warm-up jacket with a front zip and double dart seams. Ideal for staying warm or as a team uniform. Pairs well with Belem pants.

Double Viscose Elasthan Jersey



NAVY BLACK



ALCYONE



Men: XS - S - M - L

Men's wide elastic 12,50 cm waistband.

Offering effortless support and a fitted silhouette.

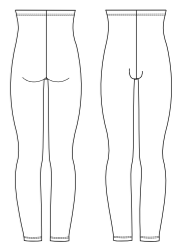
Elastic Elasthan



DARK BEIGE BLACK



HAMADA



Children: 4/6 - 6/8 - 8/10 - 10/12
Men: XS - S - M - L - XL

Heavyweight footless tights for men with a roll-down high waist or suspenders for class or performance.

Cotton Elasthan



WHITE GREY BLACK



CLOVIS



Children: 4/6 - 6/8 - 8/10 - 10/12
Men: XS - S - M - L

These men's convertible tights feature a comfortable opening under the arch, avoiding seams under the foot for optimal comfort.

Cotton Elasthan



WHITE GREY BLACK

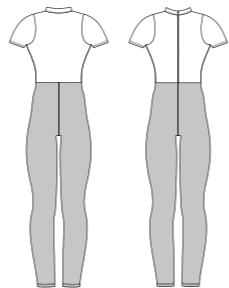




ELAN

Children: 6/8 - 8/10 - 10/12
Men: XS - S - M - L - XL

Men's two-tone footless unitard.
High neck with zipper front.
Cotton Elasthan

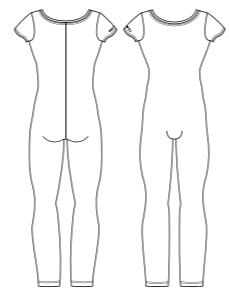


ATLAS



Children: 8/10 - 10/12 - 12/14
Men: XS - S - M - L - XL

Cap sleeved men's unitard with a
wide neckline in front and back.
Microfiber





ALPIN



Children: 4/6 - 6/8 - 8/10 - 10/12 - 12/14
Men: XS - S - M - L - XL

Raglan sleeves scoop neckline t-shirt, fits tight and close to the body.
Microfiber



CONRAD



Children: 4/6 - 6/8 - 8/10 - 10/12 - 12/14
Men: XS - S - M - L

An ideal uniform staple, this crewneck cap sleeve men microfiber shirt is anything but basic.
Microfiber



HAXO



Children: 4/6 - 6/8 - 8/10 - 10/12 - 12/14
Men: XS - S - M - L - XL

This soft microfiber, short sleeve, V-neck T-shirt is classic and exceptionally comfortable.
Microfiber

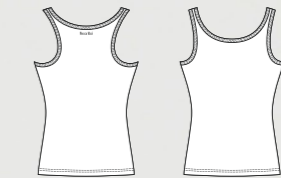


MERCURY



Children: 4/6 - 6/8 - 8/10 - 10/12 - 12/14
Men: XS - S - M - L - XL

This sleeveless tank top features a low-cut rounded neckline and wide back openings. The tapered fit ensures comfort and freedom of movement for dance classes.
Microfiber

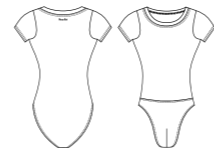




IGOR



Children: 4/6 - 6/8 - 8/10 - 10/12 - 12/14
Men: XS - S - M - L



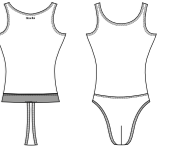
Wide neck men's leotard with cap sleeves. Full seat bottom without front padding. Microfiber



VERSAO



Children: 6/8 - 8/10 - 10/12 - 12/14
Men: XS - S - M - L

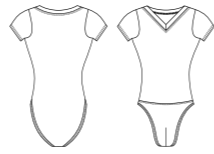


Microfiber basic men's full tank leotard with attached thong back dance belt. Microfiber



ALTAN

Children: 4/6 - 6/8 - 8/10 - 10/12
Men: XS - S - M - L



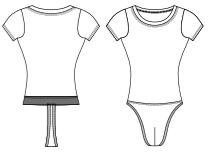
Men's full seat leotard. V-front cotton shirt, attached front padded full seat dance belt. Cotton Elasthan



JASON



Children: 6/8 - 8/10 - 10/12 - 12/14
Men: XS - S - M - L - XL



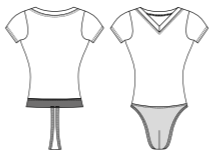
Short sleeve leotard with wide front and back scoop neck and built in dancebelt with thong back. Microfiber



HORACIO



Children: 6/8 - 8/10 - 10/12 - 12/14
Men: XS - S - M - L - XL



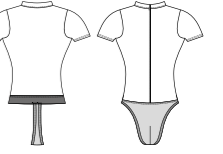
One of the most requested items, full microfiber shirt and attached microfiber dance belt combination. An ideal uniform piece for all ages, perfect for class and stage. Microfiber



OBERON



Children: 6/8 - 8/10 - 10/12 - 12/14
Men: XS - S - M - L - XL

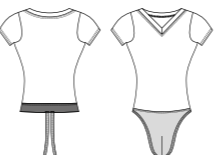


Short sleeve leotard with zippered front mock turtleneck and built in dancebelt with thong back. Microfiber

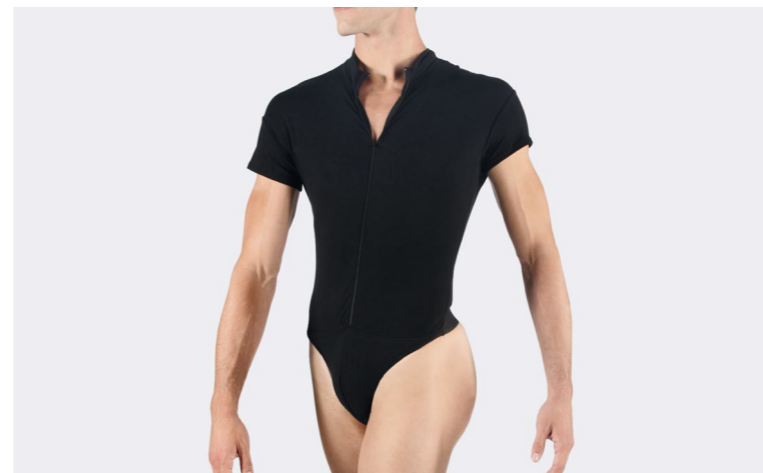


IVAN

Children: 6/8 - 8/10 - 10/12
Men: XS - S - M - L - XL

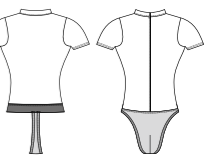


Short sleeve V-neck cotton leotard features a built in fully front padded dance belt with thong back. An ideal uniform piece for all ages. Cotton Elasthan



CONDOR

Children: 6/8 - 8/10 - 10/12
Men: XS - S - M - L - XL

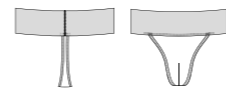


Short-sleeve mock turtleneck leotard with low zip front and padded dance belt with thong back. Ideal for ballroom and ballet. Cotton Elasthan





DANCE BELT EXTRA WIDE

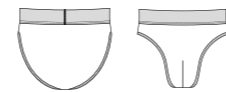


Men: XS - S - M - L - XL

Cotton elastane fully padded dance belt featuring a thong back and 12,5cm comfortable extra-wide elastic for added support.
Cotton Elasthan



DANCE BELT FULL SEAT

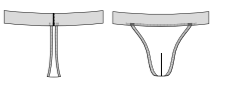


Children: 4/6 - 6/8 - 8/10 - 10/12 - 12/14
Men: XS - S - M - L - XL

Boys/Men's full back dance belt. Features 4cm elastic waistband, contoured front shaped to the male anatomy and full front padding.
Cotton Elasthan



DANCE BELT NARROW

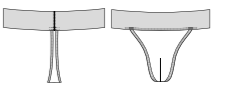


Children: 8/10 - 10/12 - 12/14
Men: XS - S - M - L - XL

Cotton elastane fully padded dance belt features a thong back and 4cm soft touch elastic for comfort. Runs true to size.
Cotton Elasthan



DANCE BELT WIDE



Men: XS - S - M - L - XL

Cotton elastane fully padded dance belt features a thong back and 7,2cm soft touch elastic for comfort. Runs true to size.
Cotton Elasthan



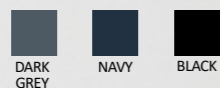
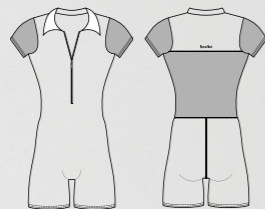


ROMEO

Men: XS - S - M - L

Men's unitard in microfiber with stretch mesh sleeves and back panel. Polo collar, front zip.

Microfiber - Stretch Tulle



DARK GREY NAVY BLACK

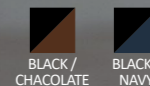
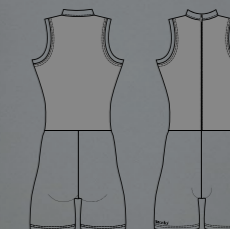


CAPRI



Men: XS - S - M - L

Men's mock turtleneck, sleeveless biketard featuring a soft front zipper edging detail and a men's leg cut. Microfiber



BLACK/CHOCOLATE BLACK/NAVY



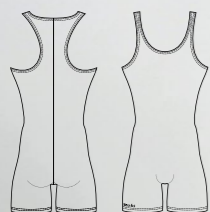
TANGO



Children: 8/10 - 10/12
Men: XS - S - M - L

This men's microfiber, racerback, tank, biketard with men's leg cut features shorter leg length and is great fitting for men.

Microfiber

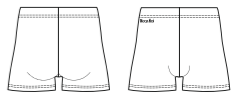


BLACK



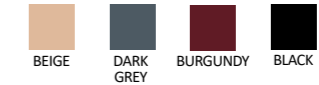


MARCEAU

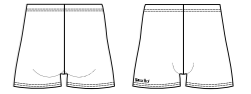


Children: 6/8 - 8/10 - 10/12
Men: XS - S - M - L

Basic men's fitted dance short with four-way stretch. Microfiber



PACO

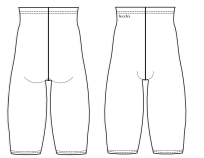


Children: 6/8 - 8/10 - 10/12
Men: XS - S - M - L

Men's leg cut, cotton shorter length shorts that include a comfortable elastic waistband. Cotton Elasthan



ODEON



Children: 4/6 - 6/8 - 8/10 - 10/12
Men: XS - S - M - L

This men's microfiber over-the-knee dance pants is a perfect uniform option. Reinforced inseam gusset and secure waist elastic. Microfiber



LORCA



Children: 4/6 - 6/8 - 8/10 - 10/12
Men: XS - S - M - L

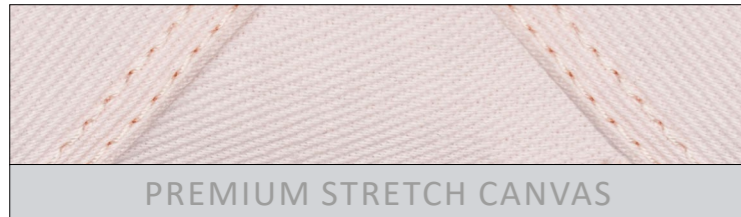
Men's athletic short with a thin waistband, loose fit and maximum flexibility. Microfiber



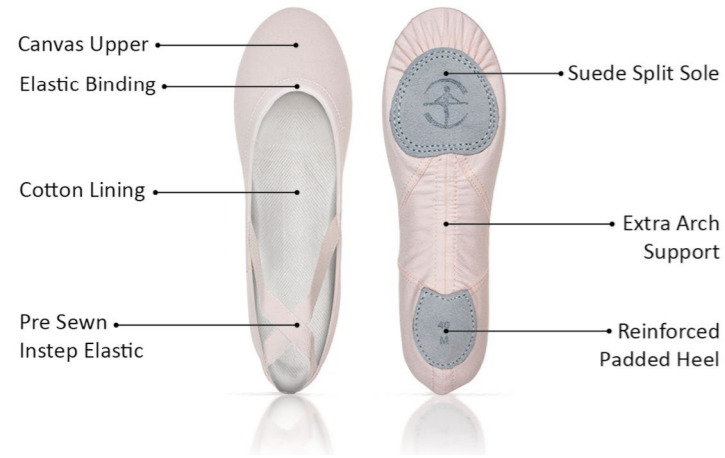


«Made by dancers,
for dancers»

Wear Mei
Designed in France
SHOES & TIGHTS



PREMIUM STRETCH CANVAS



All sizes are unisex.

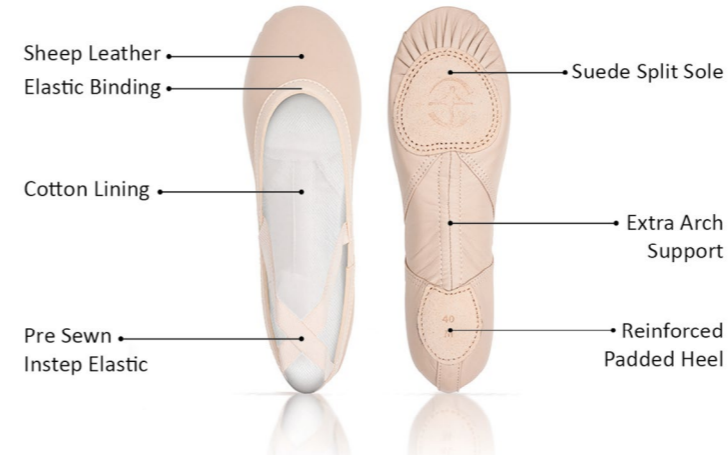
VESTA

Split-sole stretch canvas ballet shoe. Full stretch canvas is handmade and machine stitched. No drawstring binding, which provides unsurpassed comfort and flexibility. This premium shoe also offers flat stitch pleats that prevent bunching and bulging under the toes and the sole of the foot. Lower vamp shows off the arch of the foot while the stretch canvas material will hug the dancer's foot and provide a sleek and professional look. Available in three widths. We suggest opting for two sizes larger than your regular fit. If you want more support, sticking to your usual size or going one size up would be ideal.

NARROW: Size 26 to 46
MEDIUM: Size 24 to 50 - up to size 46 in LIGHT PINK
WIDE: Size 33 to 50 - not available in LIGHT PINK
No Half Size



PREMIUM STRETCH LEATHER



All sizes are unisex.

PLUTON

Split-sole premium "stretch" leather ballet shoe. Full glove leather is handmade and machine stitched. No drawstring binding, which provides unsurpassed comfort and flexibility. This premium shoe also offers flat stitch pleats that prevent bunching and bulging under the toes and the sole of the foot. Lower vamp shows off the arch of the foot while the premium glove leather material will hug the dancer's foot and provide a sleek and professional look. Available in three widths.

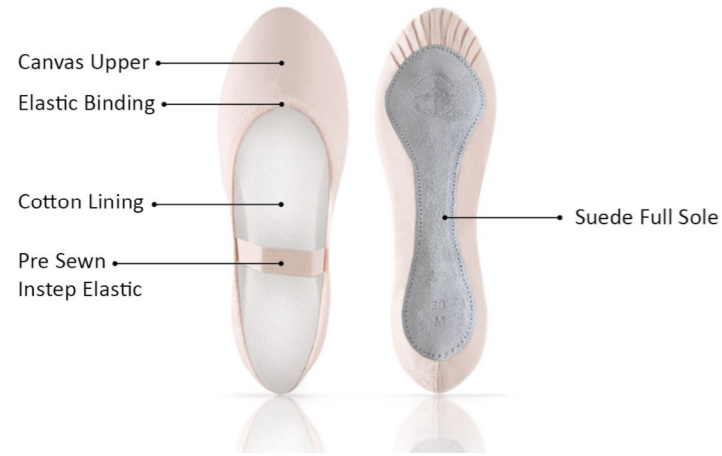
NARROW: Size 33 to 44
MEDIUM: Size 28 to 50
WIDE: Size 38 to 50
No Half Size





JUNON * ♂

These full sole canvas ballet shoes come in both medium and narrow widths to accommodate growing feet. The full sole design will provide support for our beginner dancers as they learn how to point and arch. Durable canvas on top and sturdy leather sole at the bottom with soft interior lining for comfort.



NARROW: Size 26 to 43
MEDIUM: Size 23 to 43
No Half Size

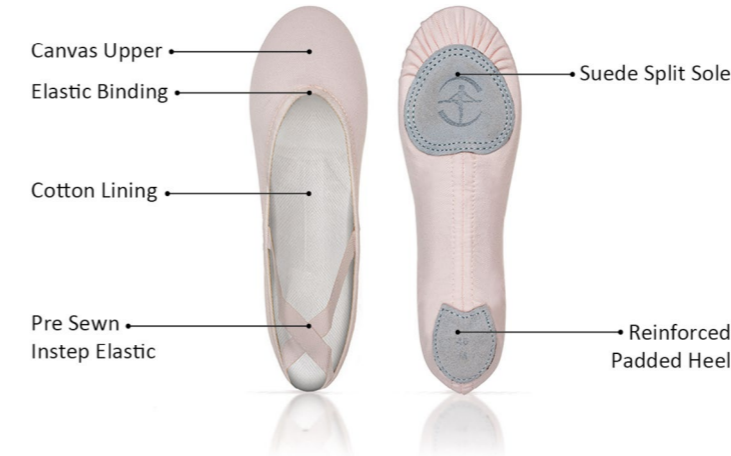


All sizes are unisex.



CERES ♀

A perfect premium stretch canvas ballet shoe for beginners with the look and feel of our Vesta. Two widths are provided to accommodate growing feet. Split-sole ballet slipper with pre-sewn elastics.

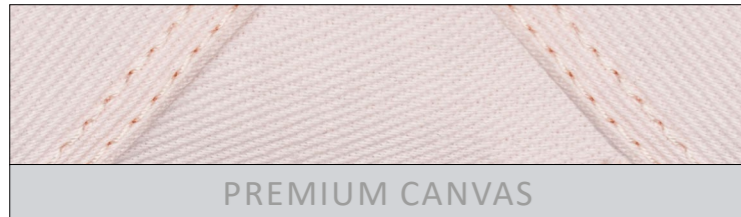


NARROW: Size 26 to 43
MEDIUM: Size 23 to 43
No Half Size

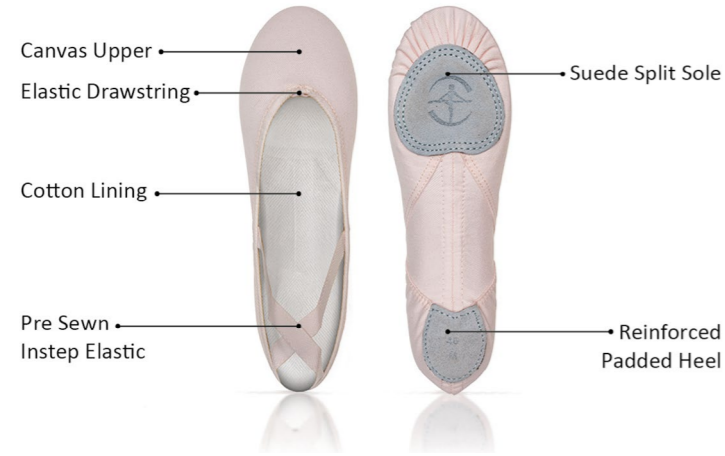


All sizes are unisex.





PREMIUM CANVAS



All sizes are unisex.

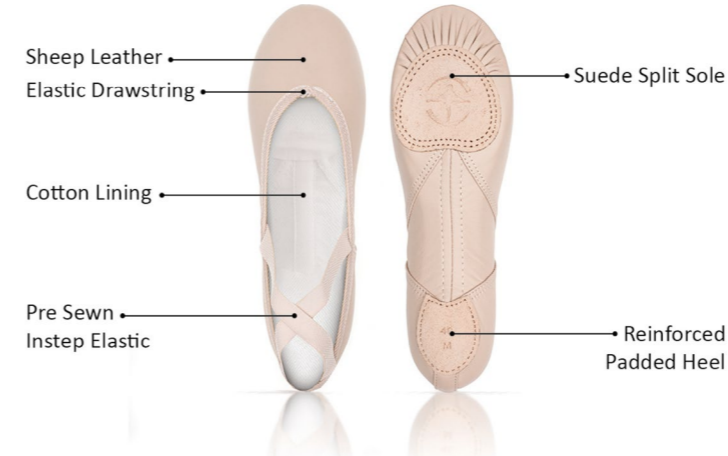
NEPTUNE

This premium split-sole ballet shoe features high quality canvas and flexible lining for comfort. Flat stitch pleats prevent bunching and bulging under the toes and the sole of the foot. Lower vamp as well as arch stitching shows off the arch of the foot and the shape of the sole which creates a better profile under the foot. Available in two widths.

NARROW: Size 30 to 44
MEDIUM: Size 26 to 50 - up to size 46 in LIGHT PINK
No Half Size



PREMIUM LEATHER



All sizes are unisex.

SATURNE

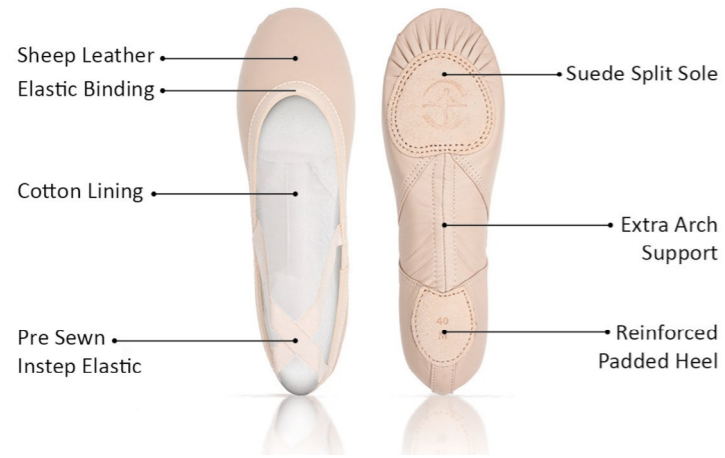
Split-sole premium leather ballet shoe. Full glove leather is handmade and machine stitched. This premium shoe also features flat stitching of the pleats that prevents bunching and bulging under the toes and the sole of the foot. Lower vamp shows off the arch of the foot while the premium glove leather material will hug the dancer's foot and provide a sleek and professional look. Available in two widths.

NARROW: Size 36 to 44
MEDIUM: Size 30 to 46
No Half Size





PREMIUM STRETCH LEATHER



All sizes are unisex.

ASTRA

Discover our ASTRA soft shoes, a perfect fusion of comfort and durability. Designed to enhance your dance experience, these leather soft shoes ensure unmatched quality. Their ergonomic inner sole is equipped with specially designed foam for optimal comfort. Their durable quality, combined with innovative features, makes them the perfect choice for dancers aiming to master the basics while enjoying comfortable practice. Treat yourself to elegance and performance, and dance with confidence.

CHILD: Size 23 to 35
ADULT: Size 36 to 42
WIDTHS: N (NARROW) - M (MEDIUM) - W (WIDE)
No Half Size



BALLET PINK



Collection Première

ASTRA

Affordable leather ballet slippers

INSTINCT 2

Stretch leather "Turner Shoe" with a high quality elastic binding and two elastics for secure fit. This turner shoe will allow a dancer to practice and perform their best without worrying about their toes separating.

The soft leather properly follows the dancer's foot. Half-sole design with covered toes. Suede sole with pleats. Premium elastic sewn in two directions for secure fit and wear. Ideal for dancers that want a closed toe shoe without the heel constriction.

Leather
Size: XS - S - M - L - XL



SAUMON

IMPULSE 2

Stretch canvas "Turner Shoe" with a high quality elastic binding and two elastics for secure fit. This turner shoe will allow a dancer to practice and perform their best without worrying about their toes separating.

Stretch canvas properly follows the dancer's foot. Half-sole design with covered toes. Suede sole with pleats. Premium elastic sewn in two directions for secure fit and wear. Ideal for dancers that want a closed toe shoe without the heel constriction.

Stretch canvas
Size: XS - S - M - L - XL

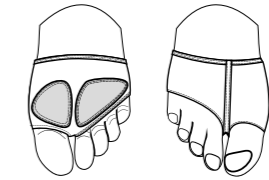


DARK PINK TAN WALNUT

PEGASUS

Innovative, perforated microfiber material providing an invisible look in class and on stage. This breathable modern-style shoe will allow a dancer to have support, padding on the ball of the foot as well as connection to the floor with an open-toe design. It separates the toe from rest of foot and provides a snug, glove-like fit with its premium elastic binding.

Perforated microfiber
Size: XS - S - M - L - XL - XXL



DARK BEIGE



DEMI-POINTE

The Demi-Pointe is a wonderful way for a dancer **to transition** from a Vesta or Pluton ballet slipper to one of Wear Moi’s popular pointe shoe styles.

This satin shoe is handmade in the **turned construction method** and features evenly spaced pleats on the bottom/front of the shoe.

The Demi-Pointe contains a leather sole and a **lightweight box toe**, like traditional pointe shoes. The most important thing to remember about a Demi-Pointe is that **it does not contain a shank** - the most vital part of a pointe shoe to stand “en pointe”. The most effective use of a Demi-Pointe is when it is part of the syllabus required by a school or conservatory, where a teacher can use this tool in the training process towards pointe work. Typically, teachers will recommend ballet slippers at the barre and a Demi-Pointe for center work one year before the student advances to “full” pointe. This allows the foot to **become conditioned to the feel of a pointe shoe**.

In addition, a Demi-Pointe develops and strengthens muscles in preparation for full pointe work. Also, the young dancer becomes familiar with tying their ribbons. The Demi-Pointe is available with pre-stitched, high-quality **satin or cotton ribbons** free of charge.

Demi-Pointe’s sizing follows the **UK sizing system**.

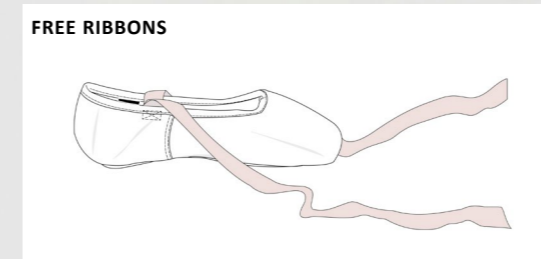
DEMI-POINTE

Satin demi-pointe shoes. Special box for beginners with a U cut throat and no shank. Excellent pre-pointe shoe to develop and strengthen the muscles in preparation for full pointe work. Should never be used to go “en pointe”. Elastic drawstring.



SAUMON

SIZE	WIDTH	FREE RIBBONS
2 to 7	medium wide extra wide x extra wide	X XX XXX XXXX
		available with pre-stitched satin or cotton



DEMI-POINTE MORE OPTIONS SIZE

If your size does not match our core sizing, you have more size options to order, ranging from 13 to 9.

	MORE OPTIONS			STOCK ITEMS											MORE OPTIONS			
SIZE UK	13	1	1.5	2	2.5	3	3.5	4	4.5	5	5.5	6	6.5	7	7.5	8	8.5	9
SIZE EUR	32	33	33.5	34	35	35.5	36	36.5	37	38	39	39.5	40	41	41.5	42	42.5	43
SIZE JAPAN	19.8	20.4	20.8	21.1	21.8	22.1	22.4	22.8	23.1	24.2	24.9	25.5	25.8	26.4	26.8	27.2	27.5	27.8
SIZE US	1	3.5	4	4.5	5	5.5	6	6.5	7	7.5	8	8.5	9	9.5	10	10.5	11	11.5

By **ARIAL**
Wear Mei

Boasting a universal fit, the shoe is pre-arched and features clean lines, a low crown, and a U-shaped throat. The sole's new design enhances grip for better floor adhesion.

ARIAL stands out for its unmatched comfort, thanks to the ultra-soft, moisture-wicking inner lining with a peach-skin effect. Inside, a reinforced platform and soft tip pad provide additional cushioning, while high wings support the metatarsals.

ARIAL's flexible shanks allow smoother transitions through demi-pointe, providing stability while feeling light and agile. Its lightweight design allows it to fit most feet effortlessly, requiring minimal adjustments from the dancer.

Arial is available with pre-stitched, high-quality satin or cotton ribbons free of charge.

Arial's sizing follows the **UK sizing system**.

Elastic drawstring encased in a cotton binding



ARIAL
Comfort Meets Performance

ARIAL EXTRA SOFT

Arial Extra Soft shank provides minimal support to the arch and is ideal for dancers transitioning from a demi-pointe shoe to their first pair of pointe shoes. Additionally, this shank is suited for dancers with tight ligaments or an underdeveloped arch.





SAUMON

SIZE	WIDTH	FREE RIBBONS
1 to 8	narrow medium wide extra wide x extra wide	N X XX XXX XXXX
		satin or cotton

 → STANDARD WINGS
 → EXTRA SOFT

LOW PROFILE BOX



 TEXON
LEATHER

BINDING: ELASTIC DRAWSTRING


ARIAL SOFT

Arial Soft shank provides light support to the arch and is ideal for dancers with tight ligaments or an underdeveloped arch. In most cases, a "beginner" who is starting pointe work will be best served with a soft shank. The minimal support provided by a soft shank will allow the dancer to stretch their ligaments to enable the dancer to stand fully "on top" of their platform. In other cases, a "seasoned" dancer with very tight ligaments may continue to wear a soft shank.





SAUMON

SIZE	WIDTH	FREE RIBBONS
1 to 8	narrow medium wide extra wide x extra wide	N X XX XXX XXXX
		satin or cotton

 → HIGH WINGS
 → SOFT
 → FULL SHANK

LOW PROFILE BOX



 TEXON
TEXON
LEATHER

BINDING: ELASTIC DRAWSTRING

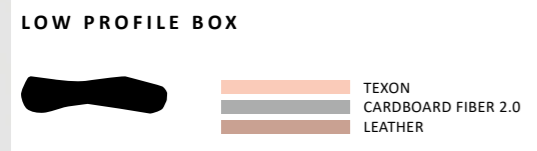
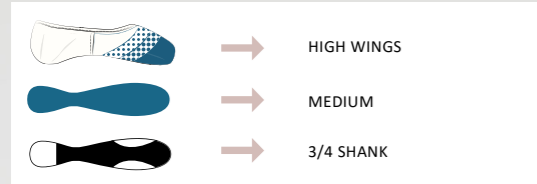
ARIAL MEDIUM

Arial Medium shank provides ample support to the arch for most dancers. For dancers with pliable ligaments, a medium shank allows them to stand "on top" of their platform with great ease. The three-quarter cut shank provides the utmost contact to the arch for maximum support while "en pointe". The specially designed shank provides the utmost contact to the arch for maximum support.



SAUMON

SIZE	WIDTH	FREE RIBBONS
1 to 8	narrow medium wide extra wide x extra wide	N X XX XXX XXXX
		satin or cotton



BINDING: ELASTIC DRAWSTRING

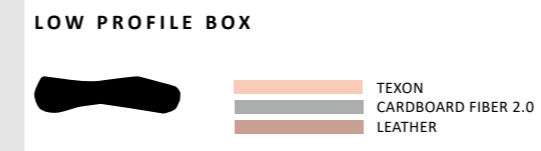
ARIAL HARD

Arial Hard shank supports a malleable arch with stretched ligaments. For the best support for this type of arch, a hard shank will provide the most significant support. In addition, the shank must conform to the foot's arch. The three-quarter cut shank provides the utmost contact to the arch for maximum support while "en pointe". The specially designed shank provides the utmost contact to the arch for maximum support.



SAUMON

SIZE	WIDTH	FREE RIBBONS
1 to 8	narrow medium wide extra wide x extra wide	N X XX XXX XXXX
		satin or cotton



BINDING: ELASTIC DRAWSTRING



Sleek and elegant, the Alfa pointe shoe is ideal for the **moderate-shaped Greek or Roman foot**, where the second toe predominates or two toes of equal length. Handmade in the classic **turned construction** method (made inside out) by craftsmen trained in age-old European shoemaking traditions. Dancers embrace Alfa worldwide. Its clean lines contribute to a **moderate crown height with lowered side and heel measurements**.

An open **U-shaped throat** provides freedom in the vamp area. The throat of the pointe shoe features an **elastic drawstring encased in a cotton binding**. Its **reinforced platform ensures extended wear**, while a silicone gel tip pad applied to the inside of the shoe's platform offers additional comfort.

High wings provide lateral support to the metatarsals. A polyurethane (microfiber) insole and back-quarter panels prevent "sliding" in the shoe and wicks away moisture.

An **embossed leather outsole** marked with a decorative design, including the size, width, and shank strength, provides traction.

Alfa is available with pre-stitched, high-quality **satin or cotton ribbons** free of charge.

Alfa's sizing follows the **UK sizing system**.

Elastic drawstring encased in a cotton binding



Greek-Square



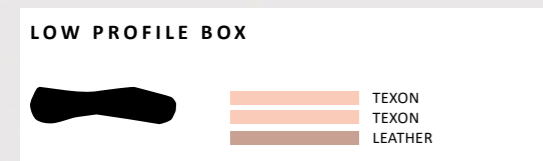
Roman

ALFA SOFT

Alfa Soft shank provides light support to the arch and is ideal for dancers with tight ligaments or an underdeveloped arch. In most cases, a "beginner" who is starting pointe work will be best served with a soft shank. The minimal support provided by a soft shank will allow the dancer to stretch their ligaments to enable the dancer to stand fully "on top" of their platform. In other cases, a "seasoned" dancer with very tight ligaments may continue to wear a soft shank.



SIZE	WIDTH	FREE RIBBONS
3 to 8	medium wide extra wide x extra wide	X XX XXX XXXX
		satin or cotton



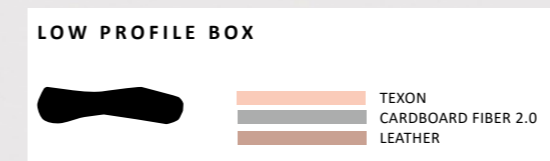
BINDIN : ELASTIC DRAWSTRING

ALFA MEDIUM

Alfa Medium shank provides ample support to the arch for most dancers. For dancers with pliable ligaments, a medium shank allows them to stand "on top" of their platform with great ease.



SIZE	WIDTH	FREE RIBBONS
3 to 8	medium wide extra wide x extra wide	X XX XXX XXXX
		satin or cotton



BINDING: ELASTIC DRAWSTRING

ALFA POINTE MORE OPTIONS

The Salmon, Walnut and Carmel colors will match your skin tone.
The White and Black colors will be more adapted to the needs of your dance performances.



If your size does not match our core sizing, you have more size options to order.

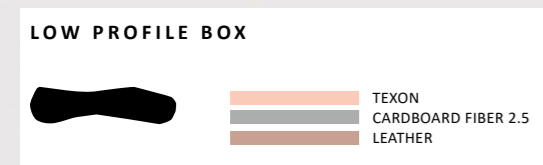
	MORE OPTIONS				STOCK ITEMS										
SIZE UK	1	1.5	2	2.5	3	3.5	4	4.5	5	5.5	6	6.5	7	7.5	8
SIZE EUR	33	33.5	34	35	35.5	36	36.5	37	38	39	39.5	40	41	41.5	42
SIZE JAPAN	20.4	20.8	21.1	21.8	22.1	22.4	22.8	23.1	24.2	24.9	25.5	25.8	26.4	26.8	27.2
SIZE US	3.5	4	4.5	5	5.5	6	6.5	7	7.5	8	8.5	9	9.5	10	10.5

ALFA HARD

Alfa Hard shank supports a malleable arch with stretched ligaments. For the best support for this type of arch, a hard shank will provide the most significant support. In addition, the shank must conform to the foot's arch. The three-quarter cut shank provides the utmost contact to the arch for maximum support while "en pointe."



SIZE	WIDTH	FREE RIBBONS
1 to 8	medium wide extra wide x extra wide	X XX XXX XXXX
		satin or cotton



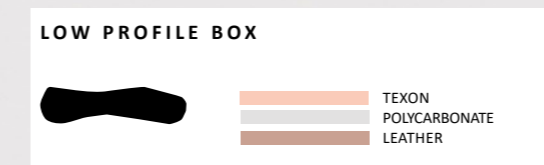
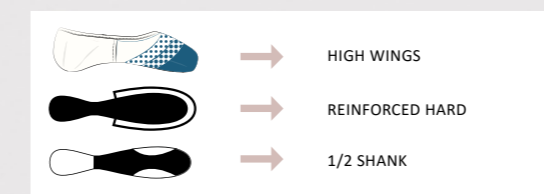
BINDING: ELASTIC DRAWSTRING

ALFA REINFORCED HARD

Alfa Reinforced Hard shank supports a highly flexible foot with stretched ligaments—either through the development of the arch or born with loose ligaments. A reinforced hard shank will provide the ultimate support to the arch. A half shank is best suited for this type of arch to ensure that the shank will conform entirely to the arch.



SIZE	WIDTH	FREE RIBBONS
3 to 8	medium wide extra wide x extra wide	X XX XXX XXXX
		satin or cotton



BINDING: ELASTIC DRAWSTRING

ALFA POINTE MORE OPTIONS

The Salmon, Walnut and Carmel colors will match your skin tone. The White and Black colors will be more adapted to the needs of your dance performances.



If your size does not match our core sizing, you have more size options to order.

	MORE OPTIONS				STOCK ITEMS										
SIZE UK	1	1.5	2	2.5	3	3.5	4	4.5	5	5.5	6	6.5	7	7.5	8
SIZE EUR	33	33.5	34	35	35.5	36	36.5	37	38	39	39.5	40	41	41.5	42
SIZE JAPAN	20.4	20.8	21.1	21.8	22.1	22.4	22.8	23.1	24.2	24.9	25.5	25.8	26.4	26.8	27.2
SIZE US	3.5	4	4.5	5	5.5	6	6.5	7	7.5	8	8.5	9	9.5	10	10.5



Like Alfa, the Omega pointe shoe is ideal for the **moderate-shaped Greek or Roman foot**, where the second toe predominates or two toes of equal length, as both pointe shoes share the same last. Omega, manufactured in the **turn construction** method (made inside out) with external pleats, is English shoemaking traditionalism at its best. Noted for its clean appearance when placed on the foot, Omega's **elasticized binding** enhances the dancers' leg line to become a natural foot extension.

Additionally, a **moderate crown height** adds to Omega's eloquent line. A **reduction of the side and heel measurement** and an open **U shape throat** display the dancers' arch to its maximum potential. Its **reinforced platform ensures extended wear**, while a silicone gel tip pad applied to the inside of the shoe's platform offers additional comfort. Lateral support at the metatarsals is due to Omega's **supportive wings**. A polyurethane (microfiber) insole and back-quarter panels prevent "sliding" in the shoe and wicks away moisture.

An **embossed leather outsole** marked with a decorative design, including the size, width, and shank strength, provides traction.

Omega is available with pre-stitched, high-quality **satin or cotton ribbons** free of charge.

Omega's sizing follows the **UK sizing system**.

Elasticized binding without drawstring



Greek-Square



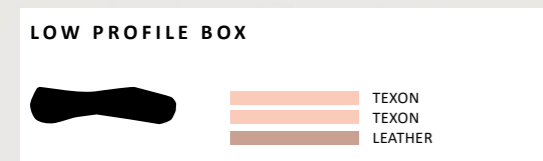
Roman

OMEGA SOFT

Omega Soft shank provides light support to the arch and is ideal for dancers with tight ligaments or an underdeveloped arch. In most cases, a "beginner" who is starting pointe work will be best served with a soft shank. The minimal support provided by a soft shank will allow the dancer to stretch their ligaments to enable the dancer to stand fully "on top" of their platform. In other cases, a "seasoned" dancer with very tight ligaments may continue to wear a soft shank.

SAUMON

SIZE	WIDTH	FREE RIBBONS
3 to 8	medium wide extra wide x extra wide	X XX XXX XXXX
		satin or cotton



BINDING: ELASTIC BINDING

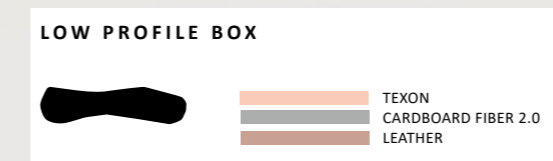
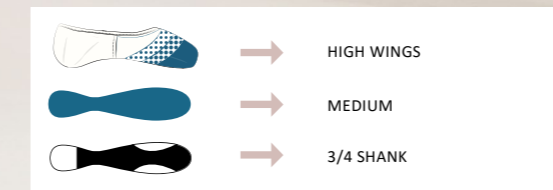


OMEGA MEDIUM 3/4

Omega Medium 3/4 shank provides ample support to the arch for most dancers. For dancers with pliable ligaments, a medium shank allows them to stand "on top" of their platform with great ease. A three-quarter cut shank provides the utmost contact to the arch for maximum support while "en pointe".

SAUMON

SIZE	WIDTH	FREE RIBBONS
3 to 8	medium wide extra wide x extra wide	X XX XXX XXXX
		satin or cotton



BINDING: ELASTIC BINDING



OMEGA POINTE MORE OPTIONS

The Salmon, Walnut and Carmel colors will match your skin tone.
The White and Black colors will be more adapted to the needs of your dance performances.



If your size does not match our core sizing, you have more size options to order.

	MORE OPTIONS				STOCK ITEMS										
SIZE UK	1	1.5	2	2.5	3	3.5	4	4.5	5	5.5	6	6.5	7	7.5	8
SIZE EUR	33	33.5	34	35	35.5	36	36.5	37	38	39	39.5	40	41	41.5	42
SIZE JAPAN	20.4	20.8	21.1	21.8	22.1	22.4	22.8	23.1	24.2	24.9	25.5	25.8	26.4	26.8	27.2
SIZE US	3.5	4	4.5	5	5.5	6	6.5	7	7.5	8	8.5	9	9.5	10	10.5

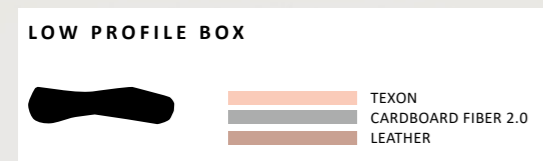
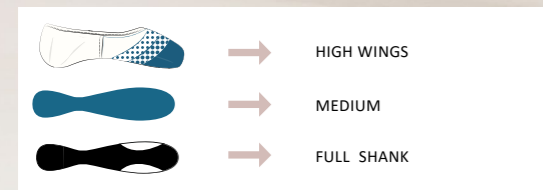
OMEGA MEDIUM

Omega Medium shank provides ample support to the arch for most dancers. For dancers with pliable ligaments, a medium shank allows them to stand "on top" of their platform with great ease.



SAUMON

SIZE	WIDTH	FREE RIBBONS
3 to 8	medium wide extra wide x extra wide	X XX XXX XXXX
		satin or cotton



BINDING: ELASTIC BINDING

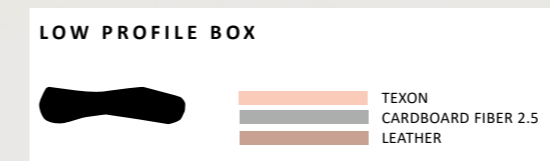
OMEGA HARD

Omega Hard shank supports a malleable arch with stretched ligaments. For the best support for this type of arch, a hard shank will provide the most significant support. In addition, the shank must conform to the foot's arch. The three-quarter cut shank provides the utmost contact to the arch for maximum support while "en pointe".



SAUMON

SIZE	WIDTH	FREE RIBBONS
3 to 8	medium wide extra wide x extra wide	X XX XXX XXXX
		satin or cotton



BINDING: ELASTIC BINDING

OMEGA POINTE MORE OPTIONS

The Salmon, Walnut and Carmel colors will match your skin tone.
The White and Black colors will be more adapted to the needs of your dance performances.



If your size does not match our core sizing, you have more size options to order.

	MORE OPTIONS				STOCK ITEMS										
SIZE UK	1	1.5	2	2.5	3	3.5	4	4.5	5	5.5	6	6.5	7	7.5	8
SIZE EUR	33	33.5	34	35	35.5	36	36.5	37	38	39	39.5	40	41	41.5	42
SIZE JAPAN	20.4	20.8	21.1	21.8	22.1	22.4	22.8	23.1	24.2	24.9	25.5	25.8	26.4	26.8	27.2
SIZE US	3.5	4	4.5	5	5.5	6	6.5	7	7.5	8	8.5	9	9.5	10	10.5

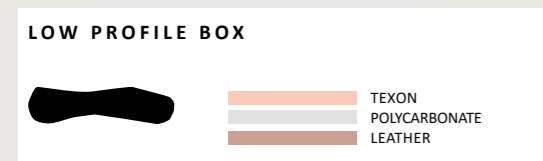
OMEGA

REINFORCED HARD

Omega Reinforced Hard shank supports a highly flexible foot with stretched ligaments—either through the development of the arch or born with loose ligaments. A reinforced hard shank will provide the ultimate support to the arch. A half shank is best suited for this type of arch to ensure that the shank will conform entirely to the arch.

SAUMON

SIZE	WIDTH	FREE RIBBONS
3 to 8	medium wide extra wide x extra wide	X XX XXX XXXX
		satin or cotton

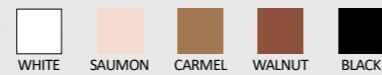


BINDING: ELASTIC BINDING



OMEGA POINTE MORE OPTIONS

The Salmon, Walnut and Carmel colors will match your skin tone. The White and Black colors will be more adapted to the needs of your dance performances.



If your size does not match our core sizing, you have more size options to order.

	MORE OPTIONS				STOCK ITEMS										
SIZE UK	1	1.5	2	2.5	3	3.5	4	4.5	5	5.5	6	6.5	7	7.5	8
SIZE EUR	33	33.5	34	35	35.5	36	36.5	37	38	39	39.5	40	41	41.5	42
SIZE JAPAN	20.4	20.8	21.1	21.8	22.1	22.4	22.8	23.1	24.2	24.9	25.5	25.8	26.4	26.8	27.2
SIZE US	3.5	4	4.5	5	5.5	6	6.5	7	7.5	8	8.5	9	9.5	10	10.5



La Pointe
By Wear Moi



La Pointe

LA POINTE SQUARE

Wear Moi

The **Roman and Greek Square foot** is an ideal foot shape for pointe work, as the first three toes are of equal length and have the most contact with the internal platform of the pointe shoe. Additionally, the external platform of the La Pointe Square offers the broadest platform of all Wear Moi pointe shoes. A broad platform provides the **greatest feeling of security** while “en pointe”.

The cut of a **U shape throat** mimics the lines of the square box and is often the choice of dancers worldwide. It contains a cotton drawstring encased in a cotton binding.

The construction of La Pointe Square is in the **turned method** and offers pleats on the bottom front of the shoe and contains a standard crown height with traditional side and heel measurements. A reinforced platform **extends the longevity of this pointe shoe**.

An **embossed leather outsole** marked with a decorative design, including the size, width, and shank strength, provides traction.

La Pointe Square is available with pre-stitched, high-quality **satin or cotton ribbons** free of charge.

La Pointe’s Square sizing follows the **UK sizing system**.



Greek-Square



Roman

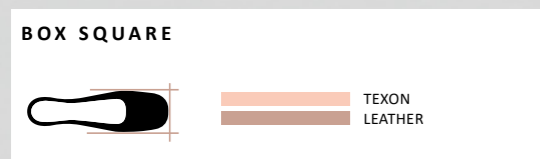
LA POINTE SQUARE EXTRA SOFT

The La Pointe Square Extra Soft shank provides minimal support to the arch and is ideal for dancers transitioning from a demi-pointe shoe to their first pair of pointe shoes. Additionally, this shank is suited for dancers with tight ligaments or an underdeveloped arch.



SAUMON

SIZE	WIDTH	FREE RIBBONS
3 to 7	medium wide extra wide x extra wide	X XX XXX XXXX
		satin or cotton



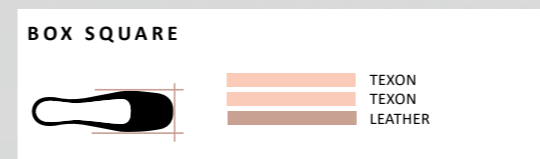
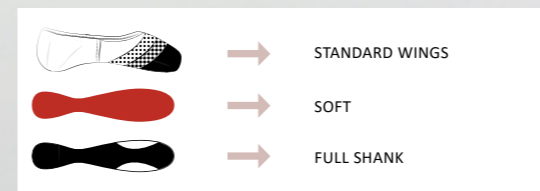
LA POINTE SQUARE SOFT

The La Pointe Square Soft shank provides light support to the arch and is ideal for dancers with tight ligaments or an underdeveloped arch. In most cases, a "beginner" who is starting pointe work will be best served with a soft shank. The minimal support provided by a soft shank will allow the dancer to stretch their ligaments to enable the dancer to stand fully "on top" of their platform. In other cases, a "seasoned" dancer with very tight ligaments may continue to wear a soft shank.



SAUMON

SIZE	WIDTH	FREE RIBBONS
3 to 7	medium wide extra wide x extra wide	X XX XXX XXXX
		satin or cotton



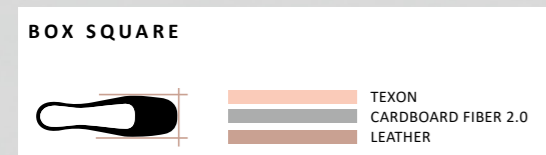
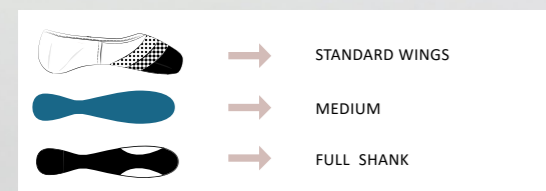
LA POINTE SQUARE MEDIUM

The La Pointe Square Medium shank provides ample support to the arch for most dancers. For dancers with pliable ligaments, a medium shank allows them to stand "on top" of their platform with great ease.



SAUMON

SIZE	WIDTH		FREE RIBBONS
3 to 7	medium	X	satin or cotton
	wide	XX	
	extra wide	XXX	
	x extra wide	XXXX	



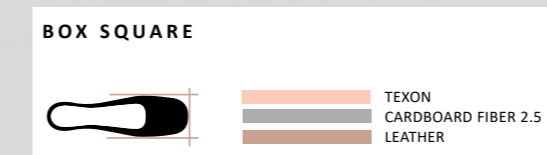
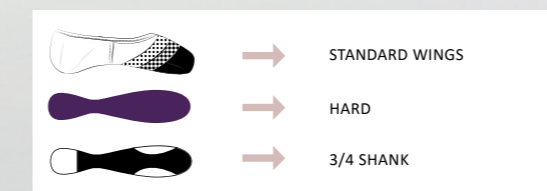
LA POINTE SQUARE HARD

The La Pointe Square Hard shank supports a malleable arch with stretched ligaments. For the best support for this type of arch, a hard shank will provide the most significant support. In addition, the shank must conform to the foot's arch. The three-quarter cut shank provides the utmost contact to the arch for maximum support while "en pointe".



SAUMON

SIZE	WIDTH		FREE RIBBONS
3 to 7	medium	X	satin or cotton
	wide	XX	
	extra wide	XXX	
	x extra wide	XXXX	



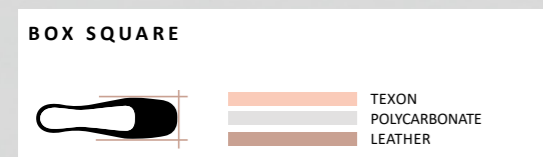
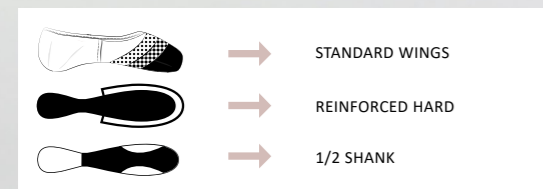
LA POINTE SQUARE REINFORCED HARD

The La Pointe Square Reinforced Hard shank supports a highly flexible foot with stretched ligaments- either through the development of the arch or born with loose ligaments. A reinforced hard shank will provide the ultimate support to the arch. A half shank is best suited for this type of arch to ensure that the shank will conform entirely to the arch.



SAUMON

SIZE	WIDTH	FREE RIBBONS
3 to 7	medium X wide XX extra wide XXX x extra wide XXXX	satin or cotton



MORE OPTIONS

If your ideal combination is not displayed in stock on the previous pages, we have other options on demand. Here's all the pre-defined combinations that you can choose from for the La Pointe Square and the La Pointe Taper models.

01

COLOR

The Salmon, Walnut and Carmel colors will match your skin tone. The White and Black colors will be more adapted to the needs of your dance performances.



02

SIZE

If your size does not match our core sizing, you have more size options to order, ranging from 13 to 9.

	MORE OPTIONS					STOCK ITEMS										MORE OPTIONS			
SIZE UK	13	1	1.5	2	2.5	3	3.5	4	4.5	5	5.5	6	6.5	7	7.5	8	8.5	9	
SIZE EUR	32	33	33.5	34	35	35.5	36	36.5	37	38	39	39.5	40	41	41.5	42	42.5	43	
SIZE JAPAN	19.8	20.4	20.8	21.1	21.8	22.1	22.4	22.8	23.1	24.2	24.9	25.5	25.8	26.4	26.8	27.2	27.5	27.8	
SIZE US	1	3.5	4	4.5	5	5.5	6	6.5	7	7.5	8	8.5	9	9.5	10	10.5	11	11.5	

03

VAMPS



Our La Pointe models have a traditional U-cut vamp. If you prefer to opt for a different line where your foot will be less exposed, you can choose the V-cut option on demand.

04

WIDTH

narrow (N) extra wide (XXX)
medium (X) x extra wide (XXXX)
wide (XX) **xx extra wide (XXXXX)**

We offer two additional widths on demand.

XXXXX width only available in La Pointe Square.

05

LENGTH & SHANK



Reinforced Extra Hard

Shank and length can be adapted according to your needs.

Extra Soft shank only available in full length

RH and RXH shanks only available in 1/2 length

La Pointe

LA POINTE TAPER

Wear Me!

The La Pointe Taper is ideally suited for the **Egyptian or Greek-Taper foot**, where the first toe (big toe) predominates, and all other phalanges reduce in length, with the fifth toe (little toe) being the shortest. The last of La Pointe Taper provides a tapered fit on the inside of the shoe for **maximum support**.

The **U throat shape** contain a cotton drawstring encased in a cotton binding.

The construction of La Pointe Taper is in the **turned method** and offers pleats on the bottom front of the shoe and contains a standard crown height with traditional side and heel measurements. The platform's durability is extended by a **reinforcement lining** placed within the box during construction.

An **embossed leather outsole** marked with a decorative design, including the size, width, and shank strength, provides traction.

La Pointe Taper is available with pre-stitched, high-quality **satin or cotton ribbons** free of charge.

La Pointe's Taper sizing follows the **UK sizing system**.



Greek-Square



Roman

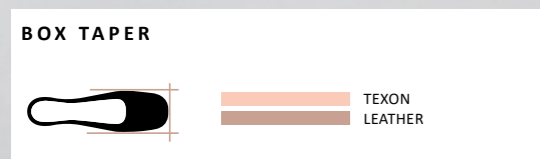
LA POINTE TAPER EXTRA SOFT

The La Pointe Taper Extra Soft shank provides minimal support to the arch and is ideal for dancers transitioning from a demi-pointe shoe to their first pair of pointe shoes. Additionally, this shank is suited for dancers with tight ligaments or an underdeveloped arch.



SAUMON

SIZE	WIDTH	FREE RIBBONS
3 to 7	medium wide extra wide x extra wide	X XX XXX XXXX
		satin or cotton



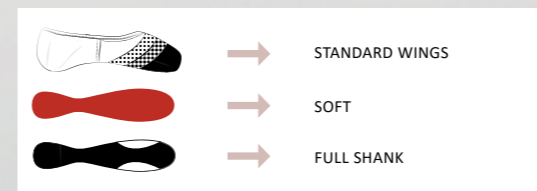
LA POINTE TAPER SOFT

The La Pointe Taper Soft shank provides light support to the arch and is ideal for dancers with tight ligaments or an underdeveloped arch. In most cases, a "beginner" who is starting pointe work will be best served with a soft shank. The minimal support provided by a soft shank will allow the dancer to stretch their ligaments to enable the dancer to stand fully "on top" of their platform. In other cases, a "seasoned" dancer with very tight ligaments may continue to wear a soft shank.



SAUMON

SIZE	WIDTH	FREE RIBBONS
3 to 7	medium wide extra wide x extra wide	X XX XXX XXXX
		satin or cotton



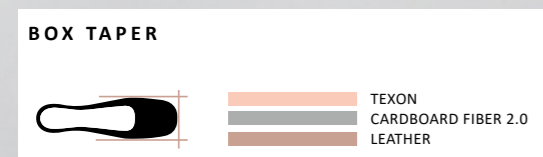
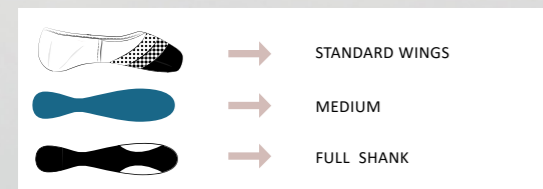
LA POINTE TAPER MEDIUM

The La Pointe Taper Medium shank provides ample support to the arch for most dancers. For dancers with pliable ligaments, a medium shank allows them to stand "on top" of their platform with great ease.



SAUMON

SIZE	WIDTH		FREE RIBBONS
3 to 7	medium	X	satin or cotton
	wide	XX	
	extra wide	XXX	
	x extra wide	XXXX	



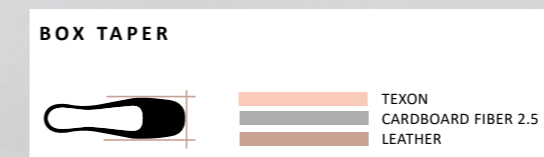
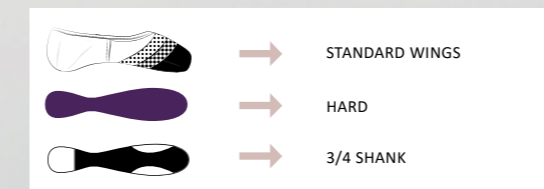
LA POINTE TAPER HARD

The La Pointe Taper Hard shank supports a malleable arch with stretched ligaments. For the best support for this type of arch, a hard shank will provide the most significant support. In addition, the shank must conform to the foot's arch. The three-quarter cut shank provides the utmost contact to the arch for maximum support while "en pointe".



SAUMON

SIZE	WIDTH		FREE RIBBONS
3 to 7	medium	X	satin or cotton
	wide	XX	
	extra wide	XXX	
	x extra wide	XXXX	



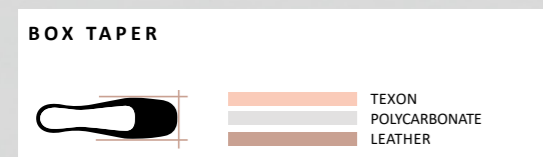
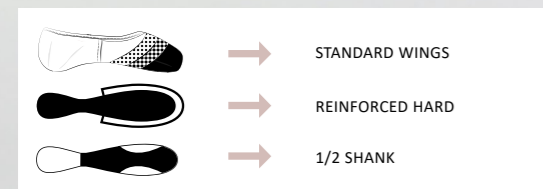
LA POINTE TAPER REINFORCED HARD

The La Pointe Taper Reinforced Hard shank supports a highly flexible foot with stretched ligaments- either through the development of the arch or born with loose ligaments. A reinforced hard shank will provide the ultimate support to the arch. A half shank is best suited for this type of arch to ensure that the shank will conform entirely to the arch.



SAUMON

SIZE	WIDTH	FREE RIBBONS
3 to 7	medium wide extra wide x extra wide	X XX XXX XXXX
		satin or cotton



MORE OPTIONS

If your ideal combination is not displayed in stock on the previous pages, we have other options on demand. Here's all the pre-defined combinations that you can choose from for the La Pointe Square and the La Pointe Taper models.

01

COLOR

The Salmon, Walnut and Carmel colors will match your skin tone. The White and Black colors will be more adapted to the needs of your dance performances.



02

SIZE

If your size does not match our core sizing, you have more size options to order, ranging from 13 to 9.

	MORE OPTIONS					STOCK ITEMS										MORE OPTIONS			
SIZE UK	13	1	1.5	2	2.5	3	3.5	4	4.5	5	5.5	6	6.5	7	7.5	8	8.5	9	
SIZE EUR	32	33	33.5	34	35	35.5	36	36.5	37	38	39	39.5	40	41	41.5	42	42.5	43	
SIZE JAPAN	19.8	20.4	20.8	21.1	21.8	22.1	22.4	22.8	23.1	24.2	24.9	25.5	25.8	26.4	26.8	27.2	27.5	27.8	
SIZE US	1	3.5	4	4.5	5	5.5	6	6.5	7	7.5	8	8.5	9	9.5	10	10.5	11	11.5	

03

VAMPS



Our La Pointe models have a traditional U-cut vamp. If you prefer to opt for a different line where your foot will be less exposed, you can choose the V-cut option on demand.

04

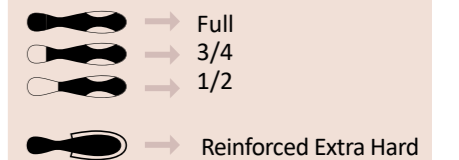
WIDTH

narrow (N) extra wide (XXX)
medium (X) x extra wide (XXXX)
wide (XX)

We offer two additional widths on demand.
XXXXX width only available in La Pointe Square.

05

LENGTH & SHANK



Shank and length can be adapted according to your needs.

Extra Soft shank only available in full length

RH and RXH shanks only available in 1/2 length

MAKING YOUR OWN CUSTOM-TAILORED SHOES

Wear Moi addresses dancers' individual needs through its Made to Measure department. Be it structural needs of the foot or esthetic preferences visually, "Custom-tailored" pointe shoes can make all the difference.

Many dancers from pre-professional to ballerinas of renowned ballet companies, already benefit from this service.



The most requested alterations to the upper include **higher or lower vamp, side, and or heel measurements. Bindings** can be produced with an elasticized casing, or a cotton drawstring encased in a cotton binding- the **drawstring may be placed on inside** if requested.

For dancers with a narrower heel in proportion to the ball of the foot, a **pin heel** may be beneficial. Shanks may be modified at the back of the shank. Lateral support at the ball of the foot may be adjusted with **lower, higher, firmer, or lighter wings**.

La Pointe By Wear Moi Made to Order

Date: ... / ... / ...

Fitter's name : _____

Name : _____

Address : _____

Phone : _____

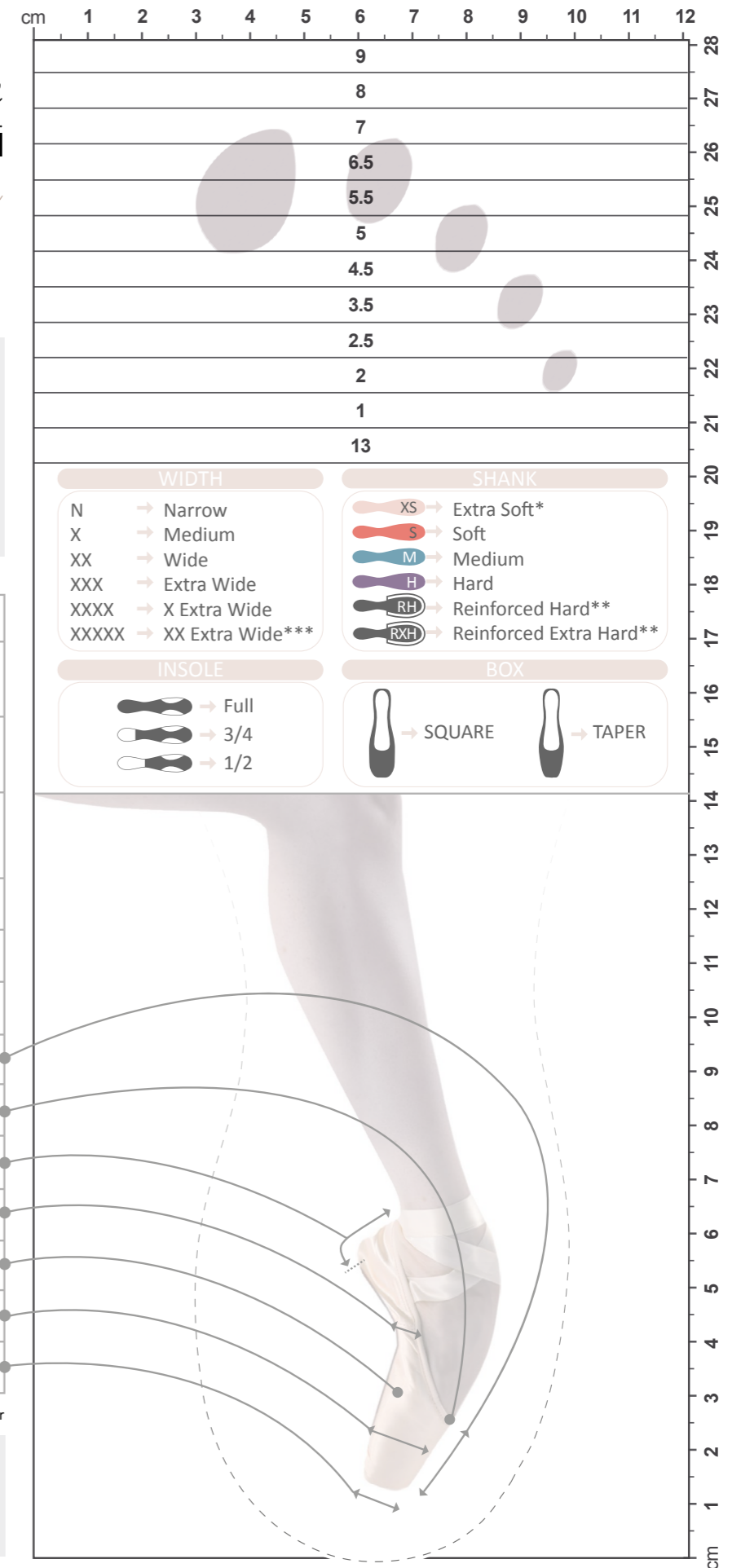
E-Mail : _____

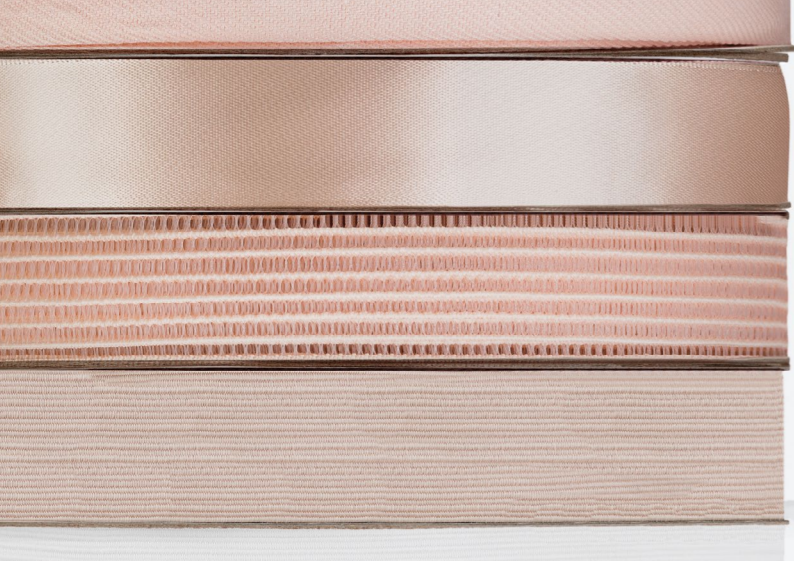
SIZE	
STREET SHOES SIZE	
METATARSAL CIRCUMFERENCE*	
WIDTH	N X XX XXX XXXX XXXXX
SHANK	XS S M H RH RXH
INSOLE	F 3/4 1/2
DRAWSTRING	ELASTIC COTTON
VAMP*	
CUT	U V
HEEL*	
SIDE*	
WINGS	STANDARD HIGH
BOX	TAPER SQUARE
PLATFORM*	

* Measurement in millimeter

Comments : _____

Mesures





DIV 56



Pre-cut pointe shoe / ballet shoe cotton ribbon.
Length: 2 m / 2.20 yards per unit
Width: 2.2 cm / 7/8" wide

DIV 57



Pre-cut pointe shoe / ballet shoe satin ribbon.
Length: 2 m / 2.20 yards per unit
Width: 2.3 cm / 7/8" wide

DIV 61



Satin ribbon with stretch insert. Takes the stress off your heel tendon. 4 units per set.
Length: 57 cm / 22" per unit
Width: 2.3 cm / 7/8" wide

DIV 58



Pre-cut pointe shoe elastic.
Length: 50 cm / 20" per unit
Width: 1.9 cm / 3/4" wide

DIV 59



Pre-cut pointe shoe invisible elastic.
Length: 50 cm / 20" per unit
Width: 2.5 cm / 1" wide

DIV 52



Thin and flexible silicone toe pads. Form perfectly to the foot allowing a dancer to truly feel the floor for proper technique while worn.

DIV 15



Cotton ribbon, perfect for canvas ballet shoes, great for the matte look.
Length: 50 m / 55 yards per roll
Width: 2.2 cm / 7/8" wide

DIV 31



Satin ribbon in roll.
Length: 80 m / 87 yards per roll
Width: 2.3 cm / 7/8" wide

DIV 55



Pointe Shoe elastic in roll.
Length: 20 m / 22 yards per roll
Width: 1.9 cm / 3/4" wide

DIV 54



Wear Moi invisible elastic in roll.
Length: 25 m / 27 yards per roll
Width: 2.5 cm / 1" wide

DIV 13



Rock rosin, a real dancers helper.
Weight: 400g / 0.88 Pound

LYCRA®



CLASSIQUE FOOTED TIGHTS – DIV 01

Footed matte semi-opaque ballet tights with a soft Lycra waistband and color-matched gusset (black excludes gusset). Super stretchy for excellent fit and performance, maintaining shape and color. Ideal for class, rehearsal, and performance. Featuring premium elastane and polyamide fibers wrapped in a special braiding technique for enhanced durability and resilience.

Microfiber - Fiber thickness: 50 denier

Children: 4/6 - 6/8 - 8/10 - 10/12
Ladies : XS - S - M - L



Wear **Moi**
Designed in France
TIGHTS



CLASSIQUE CONVERTIBLE TIGHTS – DIV 03

Convertible matte semi-opaque ballet tights, with a soft, comfortable Lycra waistband and color-matched gusset. Super stretchy, the unique weave of elastane and wrapped polyamide yarn offers exceptional durability, ensuring the tights maintain their shape through washes without shrinkage or fading. Perfect for class, rehearsal, and performance.

Microfiber - Fiber thickness: 50 denier

Children: 4/8 - 8/12 - 12/14
Ladies: S/M - L/XL



CLASSIQUE FOOTLEESS TIGHTS – DIV 60

Footless matte semi-opaque ballet tights with a soft Lycra waistband and color-matched panel (gusset excluded in black). Super stretchy for an excellent fit and performance, maintaining both shape and color. Featuring high-quality elastane and polyamide wrapped threads, with a braiding method that enhances durability and resilience. Perfect for class, rehearsal, and performance.

Microfiber - Fiber thickness: 55 denier

Children: 6/8 - 8/10 - 10/12
Ladies: XS - S - M - L





PREMIERE FOOTED TIGHTS - DIV124



Children: 4/8 - 8/12 - 12/14
Ladies: S/M - L/XL

Premiere footed tights with a supportive, thicker microfiber waistband for added comfort. Super stretchy and semi-opaque for an exceptional fit that holds its shape. Featuring a refined, lightly textured matte finish, it's the perfect option for class and performance.

Microfiber - Fiber thickness: 50 denier



PREMIERE CONVERTIBLE TIGHTS - DIV123



Children: 12/14
Ladies: S/M - L/XL

Premiere footed tights with a supportive, thicker microfiber waistband for added comfort. Super stretchy and semi-opaque for an exceptional fit that holds its shape. They easily transition from footed to footless. Featuring a refined, lightly textured matte finish, it's the perfect option for class and performance.

Microfiber - Fiber thickness: 50 denier

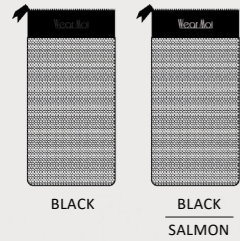


Collection PREMIÈRE Tights

DIV 79

Zippered bag made from breathable mesh that is perfect for your ballet shoes.
Honeycomb Fabric- Canvas

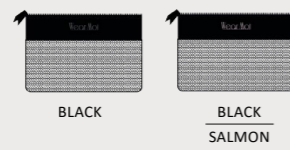
Length: 25 cm
Width: 13 cm



DIV 80

Small accessory bag featuring breathable mesh and a zippered top for security.
Honeycomb Fabric- Canvas

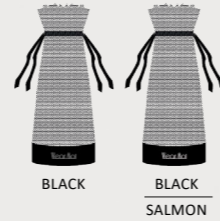
Length: 12 cm
Width: 18 cm



DIV 81

Classic breathable mesh bag with drawstrings, perfect for keeping your pointe shoes pristine.
Honeycomb Fabric- Canvas

Length: 33 cm
Width: 12 cm



DIV 92

A large size quilted tote bag, honeycomb textured, with inside compartment. Satin lining and drawstring cinch closure.
Quilted Perforated Fabric

Length: 32 cm
Width: 36 cm



DIV 93

A small size quilted tote bag, honeycomb textured, with inside compartment. Satin lining and drawstring cinch closure.
Quilted Perforated Fabric

Length: 23 cm
Width: 27 cm



DIV 94

Quilted honeycomb accessory pouch with satin lining and zippered top, perfect for storing hair accessories.
Quilted Perforated Fabric

Length: 13 cm
Width: 12 cm



DIV 82

Exclusive pointe shoe bag holds up to four pairs with breathable compartments. Features long shoulder straps for comfort.
Honeycomb Fabric- Canvas

Length: 22 cm
Width: 16 cm



Wear Moi
Designed in France
ACCESSORIES



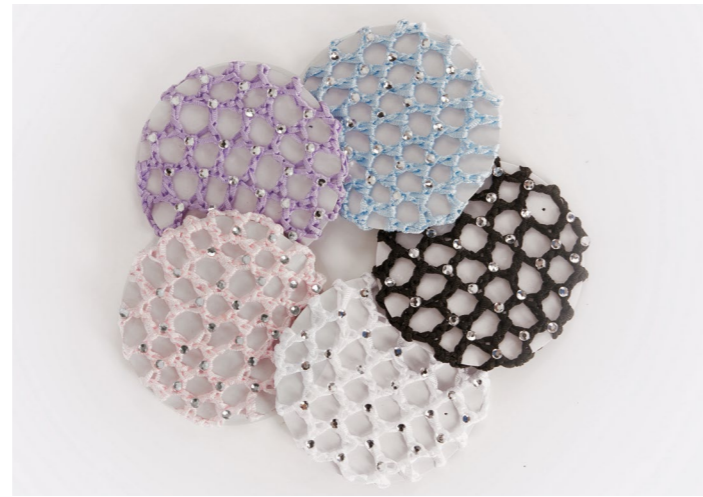
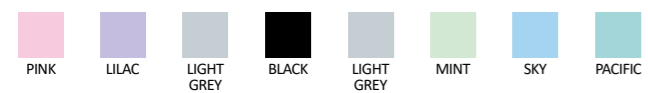
DIV 42

One Size - Microfiber scrunchies match all Wear Moi colors perfectly.
Microfiber.



DIV 118

Dance Scrunchies
Flocked Microfiber scrunchies.
One Size
Printed Microfiber



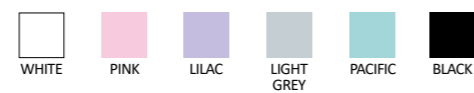
DIV 97

Bun cover with faux rhinestones. High quality materials and secure elastic.
Polythylene - Acrylic stone



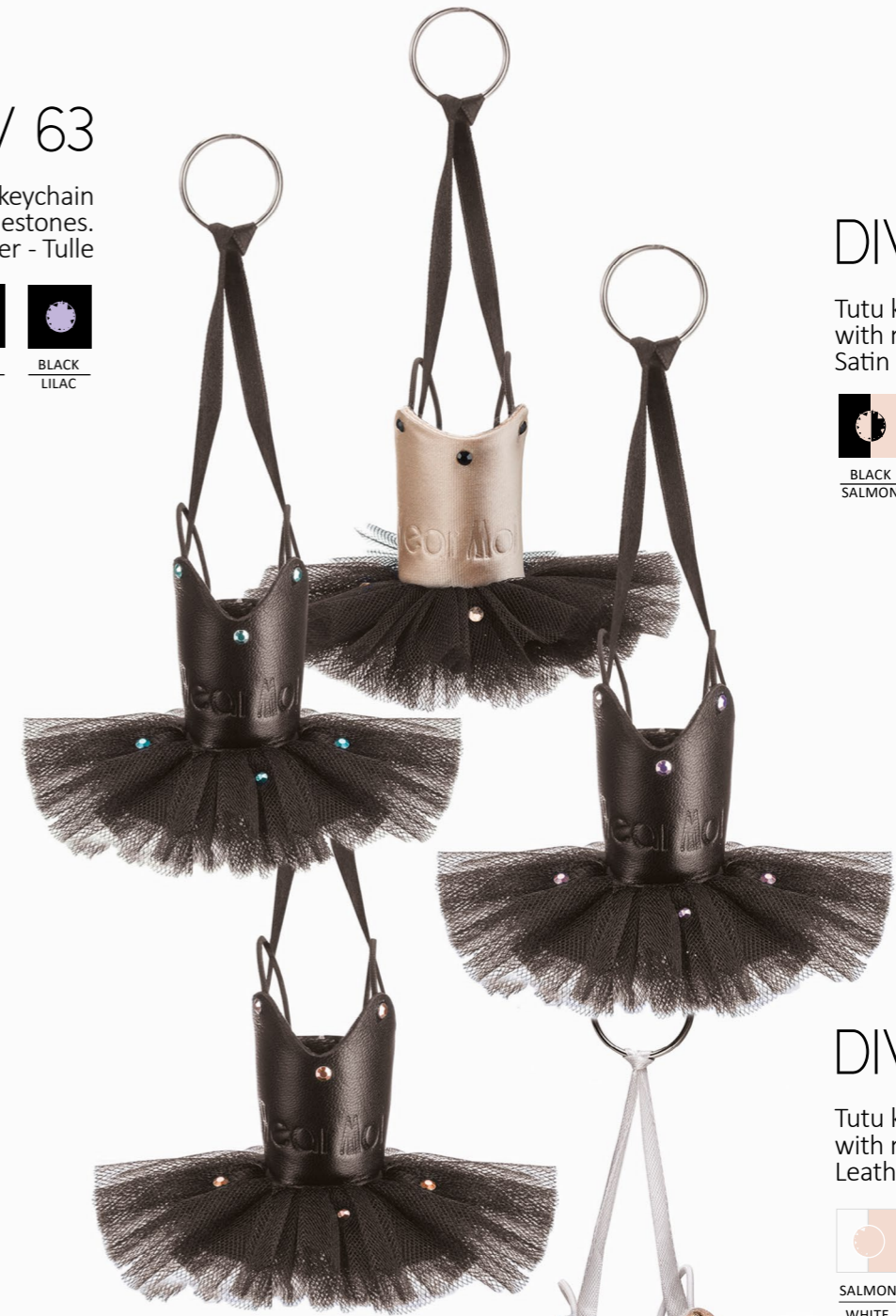
DIV 108

One Size - Stretch Lace scrunchies



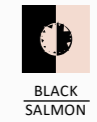
DIV 63

Tutu keychain with rhinestones.
Leather - Tulle



DIV 62

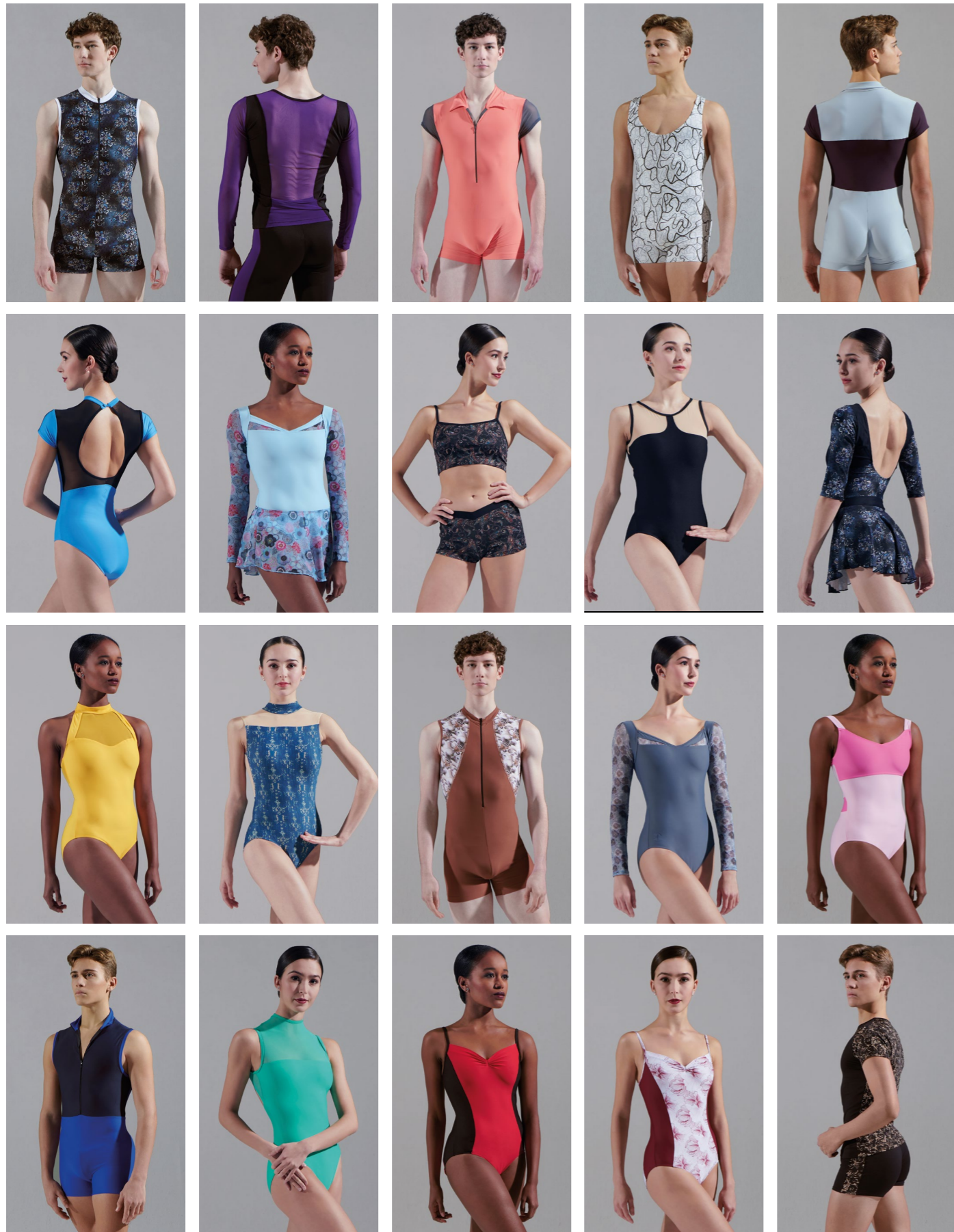
Tutu keychain with rhinestones.
Satin - Tulle



DIV 88

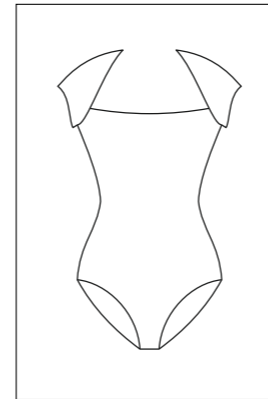
Tutu keychain with rhinestones.
Leather - Tulle





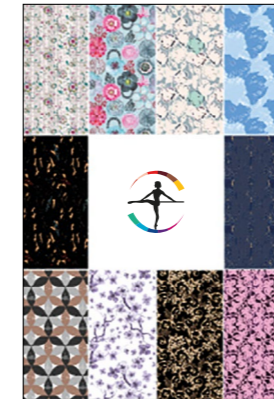
CUSTOM BY MOI

HOW DO YOU PERSONALIZE YOUR ONE-OF-A-KIND ITEM?



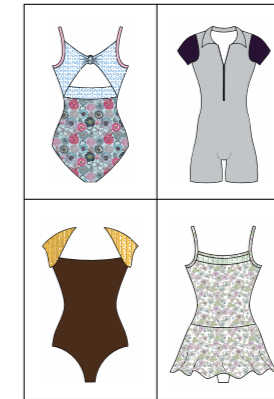
1• CHOOSE YOUR STYLE

Browse our wide range of products for women and men, and select the style you want to customize.



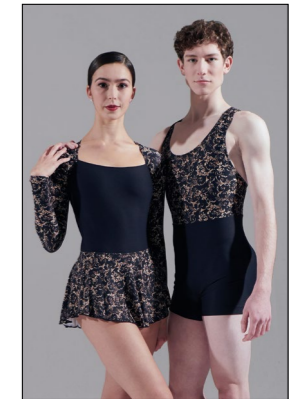
2• PERSONALIZE YOUR GARMENT

Design a unique item by applying different materials, colors and prints.



3• ORDER YOUR DESIGN

Add your creation to your cart. You will receive your original design within three to four weeks.



4• DANCE AND SHARE

Share a photo of your Custom By Moi outfit by sending an email to wearmoi@wearmoi.com!



Unleash your creativity and design your own Wear Moi clothing line with Custom by Moi!

- An extensive styles selection for women & men: from classic to innovative designs
- Thousands of possible combinations: turn your creative vision into reality
- Custom by Moi items can only be returned if defective within 30 days of receipt



MORE COLOR CHOICE

Boost your dance attire selection with our More Color Choice program! Wear Moi invites you to choose from a wide range of current designs for children, women, and men in a spectrum of colors beyond those in our catalog.



Learn more about the program!

- Order quantity: multiples of 3 units per size and color
- Only apply to options not already available in our catalog
- Delivery: 3 to 4 weeks
- Wide selection of men's and women's styles

Choose Color & Choose style - Microfiber

WHITE						
BALLET PINK						
PEACH						
PINK						
BEIGE						
LILAC						
LIGHT GREY						
MINT						
SKY						
PACIFIC						
MOKA						
FRENCH BLUE						
ROSE						
CORAL						
RED						
FUSHIA						
MIMOSA						
AZUR BLUE						
EMERALD						
WALNUT						
PURPLE						
ROYAL BLUE						
DARK GREY						
BURGUNDY						
FOREST GREEN						
PRUNE						
CHOCOLATE						
NAVY						
BLACK						

	ABBIE ARABESQUE ANGELIQUE CABRIOLE CANDIDE CAPRICE* CONCERTO CYPRES* DOLORES* EMERAUDE FAUSTINE GALATE	GENTIANE HARLOW* LAVANDE LOVINA MARIE MAUVE MELISSE* NEOMA* PAGE PIROUETTE THALIA		ARDESIA* AZUREA* BAGATTEL* BALKALA* BALLERINE* FANTAISIE*
---	---	--	--	--

	ALEGRO* APOLO* DELIA* DOLLY* DAPHNE* MAGDA* MELINA*	 ANA IKITA	 IRIS	 DIV42
	 ARIELLE GIPSY MACARON			 DIV117

	ALPIN CONRAD HAXO MERCURY	 MARCEAU ODEON	 ATLAS CAPRI TANGO	 CENTAUR HORACIO IGOR JASON LUPIN OBERON** VERSAO
---	--	--	---	---

(*) Not available in walnut and chocolate
 (**) Not available in moka, pacific, forest green, french blue and ballet pink

Choose Color & Choose style - Cotton

WHITE				
BALLET PINK				
LILAC				
SKY				
WALNUT				
GREY				
NAVY				
BLACK				

	ETUDE GLISSADE OPERA PAVANE PRELUDE REVERENCE SARABANDE		ADAGE* ENTRECHAT*
---	--	---	------------------------------------

(*) Not available in walnut

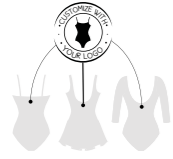


YOUR LOGO YOUR WAY

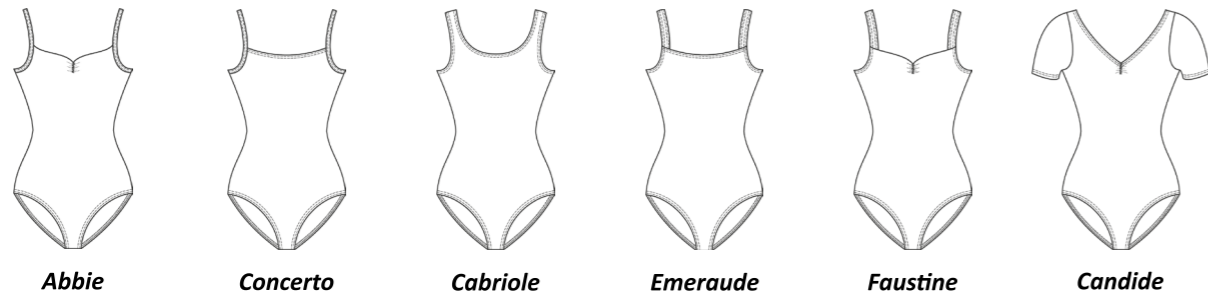


Wear Moi enables dance schools to customize uniforms by adding their logos to a curated selection of iconic Wear Moi products. These products come in a wide variety of styles, sizes, and colors, catering to children, women, and men.

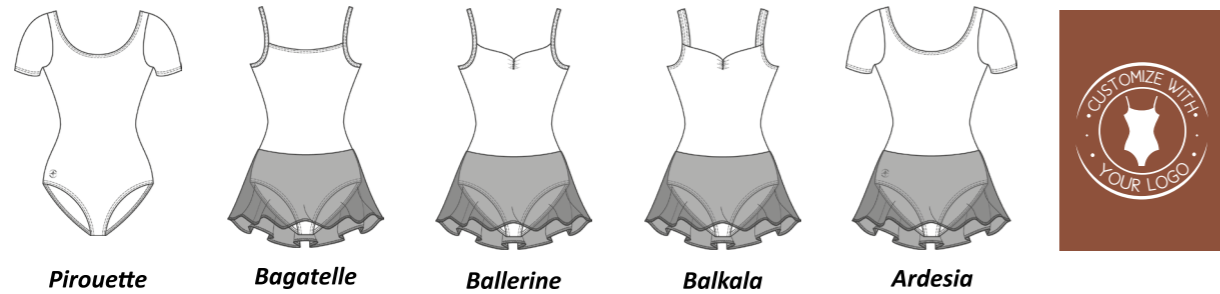
Wear Moi



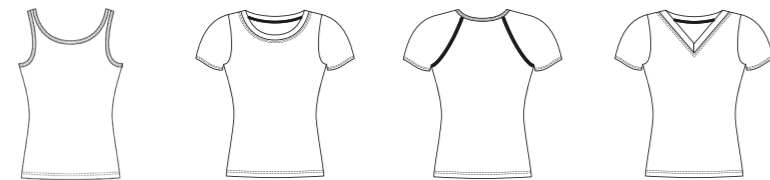
- Order minimum: multiples of 3 units per size and color
- No setup fee
- School logo will replace the Wear Moi logo
- One silkscreen color print



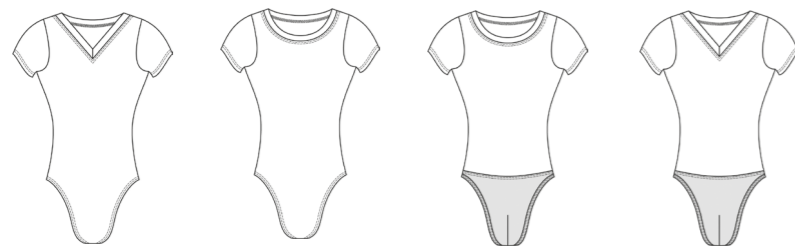
Abbie Concerto Cabriole Emeraude Faustine Candide



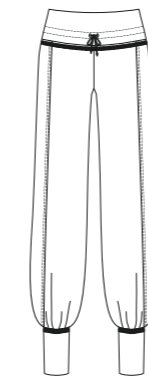
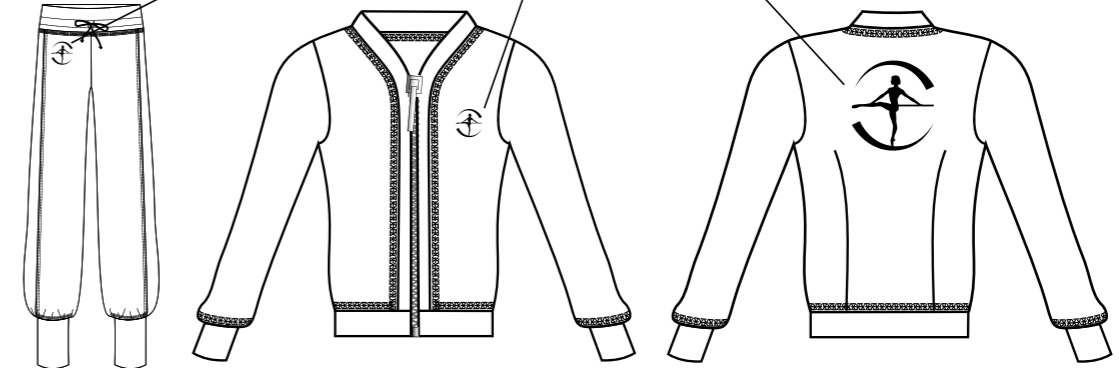
Pirouette Bagatelle Ballerine Balkala Ardesia



Mercury Conrad Alpin Haxo



Centaur Lupin Jason Horacio



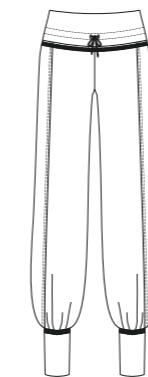
Opus



Iliade



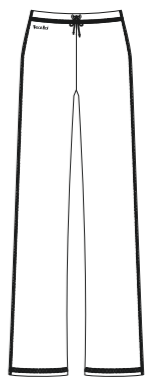
Penelope



Belem



Malone



Preston

INDEX

ABBIE	p 7
ACANTE	p 74
ADAGE	p 31
ADELA	p 22
AEGLOS	p 54
AELIS	p 23
AKARSO	p 50
AKIRA	p 23
ALBAN	p 117
ALCYONE	p 119
ALEGRO	p 18
ALFA	p 154
ALFA HARD	p 158
ALFA MEDIUM	p 157
ALFA REINFORCED HARD	p 159
ALFA SOFT	p 156
ALIAS	p 22
ALOES	p 101
ALPIN	p 124
ALTAN	p 126
ALYSON	p 82
AMINA	p 45
ANA	p 106
ANDESITE	p 23
ANGELIQUE	p 15
APOLO	p 19
ARABESQUE	p 27
ARDESIA	p 17
ARIAL	p 148
ARIAL EXTRA SOFT	p 150
ARIAL HARD	p 153
ARIAL MEDIUM	p 152
ARIAL SOFT	p 151
ARIELLE	p 20
ARLETTY	p 63
ASTRA	p 142
ATLAS	p 122
ATTITUDE	p 105
AZTEC	p 22
AZUREA	p 17

BAGATELLE	p 27
BALKALA	p 17
BALLERINE	p 17
BALLET SHOES BAG - DIV 79	p 196
BELEM	p 118
BELLE	p 41
BELMINE	p 79
BELT - DIV 117	p 23
BERGAMOTE	p 95
BUN ACCESSORIES - DIV 97	p 198
CABRIOLE	p 26
CALISSON	p 95
CALOU	p 101
CAMELIA	p 73
CANDIDE	p 10
CAPELLA	p 100
CAPRI	p 131
CAPRICE	p 14
CENTAUR	p 114
CERES	p 139
CEYLAN	p 102
CIRNUM	p 79
CLOVIS	p 119
COLCHIC	p 74
CONCERTO	p 26
CONDOR	p 127
CONRAD	p 124
CONVERTIBLE TIGHTS - DIV 03	p 192
CONVERTIBLE TIGHTS - DIV 123	p 194
COTTON RIBBON - DIV 56	p 188
COTTON RIBBON ROLL - DIV 15	p 188
CRISTAL	p 103
CRYSLIDE	p 103
CYPELLA	p 82
CYPRES	p 11
DANCE BELT EXTRA WIDE	p 128
DANCE BELT FULL SEAT	p 128
DANCE BELT NARROW	p 129
DANCE BELT WIDE	p 129
DANUBE	p 96
DAPHNE	p 18
DELIA	p 18

DEMI-POINTE	p 146
DOLLY	p 18
DOLORES	p 12
ELAN	p 122
EMERAUDE	p 7
EMMA	p 62
ENTRECHAT	p 31
EREBUS	p 97
ERINE	p 87
ETINCELLE	p 89
ETUDE	p 31
EVIDENCE	p 87
FADO	p 19
FANTASIE	p 27
FAUSTINE	p 9
FELICITE	p 56
FILAO	p 99
FOOTED TIGHTS - DIV 01	p 190
FOOTED TIGHTS - DIV 124	p 194
FOOTLESS TIGHTS - DIV 60	p 193
FRESIA	p 77
GALATE	p 7
GEMMA	p 69
GENTIANE	p 15
GIPSY	p 20
GLISSADE	p 28
GUIMAUVE	p 94
HAMADA	p 119
HARLOW	p 12
HAXO	p 124
HIDALGO	p 116
HORACIO	p 126
IGOR	p 126
IKITA	p 106
ILIADE	p 110
IMPULSE2	p 144
INSTINCT2	p 144
INVISIBLE ELASTIC - DIV 54	p 189
IRIS	p 106
IVAN	p 126
IXORA	p 35
IZALIA	p 103

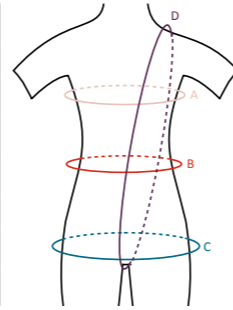
JASMIN	p 46
JASON	p 127
JUNON	p 138
KAMAE	p 67
KEYCHAIN - DIV 62	p 199
KEY RING - DIV 63	p 199
LAIKA	p 59
LA POINTE SQUARE	p 170
LA POINTE SQUARE EXTRA SOFT	p 172
LA POINTE SQUARE HARD	p 175
LA POINTE SQUARE MEDIUM	p 174
LA POINTE SQUARE MORE OPTIONS	p 177
LA POINTE SQUARE REINFORCED HARD	p 176
LA POINTE SQUARE SOFT	p 173
LA POINTE SUR MESURE	p 186
LA POINTE TAPER	p 178
LA POINTE TAPER EXTRA SOFT	p 180
LA POINTE TAPER HARD	p 183
LA POINTE TAPER MEDIUM	p 182
LA POINTE TAPER MORE OPTIONS	p 185
LA POINTE TAPER REINFORCED HARD	p 184
LA POINTE TAPER SOFT	p 181
LAVANDE	p 11
LEATHER KEYCHAIN - DIV 88	p 199
LISERON	p 49
LOBELIA	p 79
LONICERA	p 77
LORCA	p 133
LOVINA	p 10
LUPIN	p 114
MACARON	p 20
MAGDA	p 19
MAKALU	p 96
MALONE	p 118
MARCEAU	p 133
MARIE	p 14
MAUVE	p 14

MEGARA	p 42
MELEZE	p 96
MELINA	p 19
MELISSE	p 15
MENUET	p 105
MERCURY	p 125
MESH BAG - DIV 81	p 196
MESH POUCH - DIV 80	p 196
MIOSOTIS	p 82
MUSCARI	p 36
NAYA	p 102
NEOMA	p 12
NEPTUNE	p 140
NOISETTE	p 90
NUAGE	p 90
OBERON	p 127
ODEON	p 133
OMEGA	p 160
OMEGA HARD	p 165
OMEGA MEDIUM	p 164
OMEGA MEDIUM 3/4	p 163
OMEGA REINFORCED HARD	p 166
OMEGA SOFT	p 162
OPERA	p 30
OPUS	p 110
ORION	p 116
PACO	p 133
PAGE	p 13
PALOMINO	p 109
PANDORE	p 109
PATIENCE	p 108
PAVANE	p 28
PEGASUS	p 145
PENELOPE	p 110
PETUNIA	p 32
PEYA	p 54
PIROUETTE	p 26
PIVOINE	p 109
PLUTON	p 137
POINTE SHOE BAG - DIV 82	p 196
POINTE SHOE ELASTIC - DIV 55	p 188
POUCH - DIV 94	p 197

PRALINE	p 90
PRELUDE	p 30
PRE-CUT ELASTIC - DIV 58	p 189
PRE-CUT INVISIBLE ELASTIC - DIV 59	p 189
PRESTON	p 118
QUILTED TOTE BAG - DIV 92	p 197
REINE	p 71
REMOVABLE BRA INSERT	p 12
REVERENCE	p 28
ROCK ROSIN - DIV 13	p 189
ROMEO	p 130
SARABANDE	p 30
SATIN RIBBON - DIV 57	p 188
SATIN RIBBON ROLL - DIV 31	p 188
SATURNE	p 141
SCRUNCHIES - DIV 42	p 198
SCRUNCHIES - DIV 108	p 198
SCRUNCHIES - DIV 118	p 198
SMALL TOTE BAG - DIV 93	p 197
SOLO	p 116
SONATE	p 105
STRETCH INSERT SATIN RIBBON - DIV 61	p 188
SUPERBE	p 92
SWEETPEA	p 53
SYRMA	p 92
TAGE	p 99
TANGO	p 130
THALIA	p 7
TIARA	p 102
TOE PADS - DIV 52	p 189
TULIPE	p 92
UTAMI	p 103
VERSAO	p 127
VESTA	p 136

SIZE CHART - METRIC MEASUREMENT

GIRL SIZES	AGE 2/4	AGE 4/6	AGE 6/8	AGE 8/10	AGE 10/12	AGE 12/14
Height (Size)	90 - 105 cm	100 - 115 cm	110 - 125 cm	120 - 135 cm	130 - 145 cm	140 - 155 cm
WEIGHT:	10 - 15 kg	15 - 20 kg	17 - 27 kg	25 - 35 kg	30 - 40 kg	35 - 45 kg
A: Chest Width	50 - 55 cm	55 - 60 cm	60 - 65 cm	65 - 70 cm	70 - 75 cm	75 - 80 cm
B: Waist	45 - 50 cm	49 - 54 cm	50 - 55 cm	52 - 57 cm	53 - 58 cm	55 - 60 cm
C: Hips	50 - 55 cm	55 - 60 cm	60 - 65 cm	65 - 70 cm	72 - 78 cm	78 - 83 cm
D: Girth	80 - 90 cm	90 - 100 cm	100 - 110 cm	110 - 120 cm	115 - 125 cm	125 - 135 cm



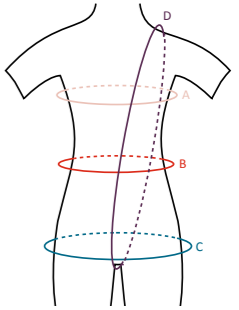
WOMEN SIZES	XS	S	M	L	XL	XXL	XXXL
Height (Size)	150 - 165 cm	160 - 175 cm	165 - 175 cm	165 - 180 cm	165 - 180 cm	165 - 185 cm	170 - 190 cm
WEIGHT:	40 - 50 kg	45 - 55 kg	50 - 60 kg	60 - 70 kg	70 - 80 kg	80 - 90 kg	90 - 100 kg
A: Chest Width	80 - 85 cm	85 - 90 cm	90 - 95 cm	95 - 100 cm	100 - 105 cm	105 - 110 cm	110 - 115 cm
B: Waist	55 - 60 cm	60 - 65 cm	65 - 70 cm	70 - 75 cm	75 - 80 cm	80 - 85 cm	85 - 90 cm
C: Hips	82 - 88 cm	87 - 92 cm	92 - 97 cm	95 - 100 cm	100 - 105 cm	105 - 110 cm	110 - 115 cm
D: Girth	132 - 140 cm	140 - 148 cm	148 - 156 cm	155 - 164 cm	164 - 172 cm	168 - 176 cm	175 - 180 cm

BOYS SIZES	AGE 2/4	AGE 4/6	AGE 6/8	AGE 8/10	AGE 10/12	AGE 12/14
Height (Size)		100 - 120 cm	113 - 133 cm	124 - 144 cm	135 - 155 cm	140 - 165 cm
WEIGHT:		15 - 20 kg	20 - 27 kg	25 - 35 kg	30 - 40 kg	35 - 45 kg
A: Chest Width		55 - 60 cm	60 - 65 cm	64 - 69 cm	68 - 75 cm	72 - 79 cm
B: Waist		52 - 57 cm	56 - 55 cm	58 - 63 cm	60 - 65 cm	63 - 68 cm
C: Hips		55 - 60 cm	60 - 65 cm	65 - 70 cm	71 - 78 cm	75 - 80 cm
D: Girth		90 - 100 cm	100 - 110 cm	110 - 120 cm	115 - 125 cm	125 - 135 cm

MEN SIZES	XS	S	M	L	XL
Height (Size)	155 - 170 cm	160 - 175 cm	165 - 180 cm	170 - 185 cm	170 - 195 cm
WEIGHT:	45 - 55 kg	55 - 65 kg	65 - 75 kg	75 - 85 kg	85 - 95 kg
A: Chest Width	76 - 83 cm	83 - 91 cm	91 - 97 cm	97 - 104 cm	104 - 110 cm
B: Waist	65 - 70 cm	70 - 75 cm	75 - 80 cm	80 - 85 cm	85 - 90 cm
C: Hips	80 - 85 cm	85 - 90 cm	90 - 95 cm	95 - 100 cm	100 - 105 cm
D: Girth	130 - 145 cm	140 - 160 cm	145 - 165 cm	150 - 170 cm	155 - 170 cm

SIZE CHART - IMPERIAL MEASUREMENT

GIRL SIZES	AGE 2/4	AGE 4/6	AGE 6/8	AGE 8/10	AGE 10/12	AGE 12/14
Height (Size)	3'1" - 3'5"	3'3" - 3'9"	3'7" - 4'1"	3'11" - 4'5"	4'3" - 4'9"	4'7" - 5'1"
WEIGHT:	22 - 33 lbs	33 - 44 lbs	37 - 59 lbs	55 - 77 lbs	66 - 88 lbs	77 - 99 lbs
A: Chest Width	19 - 21"	21 - 23"	23 - 25"	25 - 27"	27 - 29"	29 - 31"
B: Waist	18 - 20"	19 - 21"	20 - 22"	21 - 23"	21 - 23"	22 - 24"
C: Hips	20 - 22"	22 - 24"	24 - 26"	26 - 28"	29 - 31"	31 - 33"
D: Girth	31 - 35"	35 - 39"	39 - 43"	43 - 47"	45 - 49"	49 - 53"



WOMEN SIZES	XS	S	M	L	XL	XXL	XXXL
Height (Size)	4'11" - 5'5"	5'3" - 5'9"	5'5" - 5'9"	5'5" - 5'11"	5'5" - 5'11"	5'5" - 6'	5'7" - 7'1"
WEIGHT:	88 - 110 lbs	99 - 121 lbs	110 - 132 lbs	132 - 154 lbs	154 - 176 lbs	176 - 198 lbs	198 - 220 lbs
A: Chest Width	31 - 33"	33 - 35"	35 - 37"	37 - 39"	39 - 41"	41 - 43"	43 - 45"
B: Waist	21 - 24"	24 - 26"	26 - 28"	28 - 30"	30 - 32"	32 - 34"	33 - 35"
C: Hips	33 - 35"	35 - 37"	37 - 39"	38 - 40"	39 - 41"	41 - 43"	43 - 45"
D: Girth	52 - 55"	55 - 58"	58 - 62"	62 - 65"	65 - 68"	66 - 69"	68 - 71"

BOYS SIZES	AGE 2/4	AGE 4/6	AGE 6/8	AGE 8/10	AGE 10/12	AGE 12/14
Height (Size)		3'3" - 3'11"	3'9" - 4'4"	4'1" - 4'9"	4'5" - 5'1"	4'7" - 5'5"
WEIGHT:		33 - 44 lbs	44 - 60 lbs	55 - 77 lbs	66 - 88 lbs	77 - 99 lbs
A: Chest Width		22 - 24"	24 - 26"	25 - 27"	27 - 29"	29 - 31"
B: Waist		21 - 23"	22 - 24"	23 - 25"	25 - 26"	25 - 27"
C: Hips		22 - 24"	24 - 26"	26 - 28"	28 - 30"	30 - 32"
D: Girth		35 - 39"	39 - 43"	43 - 47"	45 - 49"	49 - 53"

MEN SIZES	XS	S	M	L	XL
Height (Size)	5'1" - 5'7"	5'3" - 5'9"	5'5" - 5'11"	5'7" - 6'1"	5'7" - 6'5"
WEIGHT:	99 - 121 lbs	121 - 143 lbs	143 - 165 lbs	165 - 187 lbs	187 - 209 lbs
A: Chest Width	31 - 33"	33 - 36"	36 - 38"	38 - 41"	41 - 44"
B: Waist	26 - 28"	28 - 30"	30 - 32"	32 - 34"	34 - 36"
C: Hips	32 - 34"	34 - 36"	36 - 38"	38 - 40"	40 - 42"
D: Girth	51 - 57"	55 - 62"	57 - 65"	59 - 67"	61 - 67"

SIZE CHART - TIGHTS

METRIC MEASUREMENT

DIV01 - DIV60

SIZES	4/6	6/8	8/10	10/12	XS	S	M	L
HEIGHT IN CM	100 - 115	110 - 125	120 - 135	130 - 145	150 - 165	160 - 175	165 - 175	165 - 180
WEIGHT IN KG	15 - 20	17 - 27	25 - 35	30 - 40	40 - 50	45 - 55	50 - 60	60 - 70

DIV03 - DIV123 - DIV124

SIZES	4/8	8/12	12/14	S/M	L/XL
HEIGHT IN CM	100 - 125	120 - 145	140 - 155	160 - 175	165 - 180
WEIGHT IN KG	15 - 27	25 - 40	35 - 45	45 - 60	60 - 80

IMPERIAL MEASUREMENT

DIV01 - DIV60

SIZES	4/6	6/8	8/10	10/12	XS	S	M	L
HEIGHT IN INCHES	3'3" - 3'9"	3'7" - 4'1"	3'11" - 4'5"	4'3" - 4'9"	4'11" - 5'5"	5'3" - 5'9"	5'5" - 5'9"	5'5" - 5'11"
WEIGHT IN LBS	33 - 44	37 - 59	55 - 77	66 - 88	88 - 110	99 - 121	110 - 132	132 - 154

DIV03 - DIV123 - DIV124

SIZES	4/8	8/12	12/14	S/M	L/XL
HEIGHT IN INCHES	3'3" - 4'1"	3'11" - 4'9"	4'7" - 5'1"	5'3" - 5'9"	5'5" - 5'11"
WEIGHT IN LBS	33 - 59	55 - 88	77 - 99	99 - 132	132 - 176

SIZE CHART - POINTE SHOES & DEMI POINTE

SIZE UK	13	1	1.5	2	2.5	3	3.5	4	4.5	5	5.5	6	6.5	7	7.5	8	8.5	9
SIZE US	1	3.5	4	4.5	5	5.5	6	6.5	7	7.5	8	8.5	9	9.5	10	10.5	11	11.5
SIZE EUR	32	33	33.5	34	35	35.5	36	36.5	37	38	39	39.5	40	41	41.5	42	42.5	43
SIZE JAPAN	19,8	20,4	20,8	21,1	21,8	22,1	22,4	22,8	23,1	24,2	24,9	25,5	25,8	26,4	26,8	27,2	27,5	27,8

SIZE CHART - BALLET SHOES

CHILD

EURO	23	24	25	26	27	28	29	30	31	32	33
US	7	8	8,5	9	10	10,5	11	12	12,5	13,5	1
JAPAN	14,3	15	15,6	16,3	17	17,6	18,3	19	19,6	20,3	21
UK	6	7	8	8.5	9	10	11	11.5	12.5	13	1

WOMEN

EURO	34	35	36	37	38	39	40	41	42	43	44	45	46
US	3	4	5	5,5	6,5	7	8	9	9,5	10	11	12	13
JAPAN	21,6	22,3	23	23,6	24,3	25	25,6	26,3	27	27,6	28,3	29	29,6
UK	2	2.5	3.5	4	5	5.5	6.5	7.5	8	9	9.5	10	11

MEN

EURO	34	35	36	37	38	39	40	41	42	43	44	45	46	47	48	49	50
US	2,5	3,5	4,5	5	6	6,5	7	8	8,5	9	10	11	12	12,5	13	14	15
JAPAN	21,6	22,3	23	23,6	24,3	25	25,6	26,3	27	27,6	28,3	29	29,6	30,3	31	31,6	32,3
UK	2	2,5	3,5	4	5	5,5	6,5	7,5	8	9	9,5	10	11	12	12,5	13	14

Stretch Canvas Soft Shoes: We suggest opting for two sizes larger than your regular fit. If you want more support, sticking to your usual size or going one size up would be ideal.

TURNER SHOES

	XS	S	M	L	XL					
EURO	34	35	36	37	38	39	40	41	42	43
US	4	4.5	5.5	6.5	7	7.5	8	8.5	9	9.5
UK	2	2.5	3.5	4.5	5	5.5	6.5	7	8	9
JAPAN	21	21,5	22	22,5	23,5	24,5	25,5	26	26,5	27,5

Wear Mei

Designed in France